

# Speed Controller: Standard Type In-line Push Locking Type

# AS Series

RoHS

## Lock speed setting, with the touch of a button

It can be locked only by pushing the handle after adjustment.

## Convenient opening indication scale

The opening indication scale for the needle valve is provided on the handle to facilitate speed adjustments.

## Easy speed control at low flow volume ranges

## Possible to control the mass velocity

## Constant handle constructed of metal to withstand heavy usage

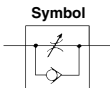
In addition to the standard handle made of resin, a heavy-duty metal handle is also available.

## Retainer prevents an accidental loss of needle



Resin handle

Metal handle



### ⚠ Caution

Be sure to read this before handling the products.  
Refer to back page 50 for Safety Instructions and pages 543 to 546 for Flow Control Equipment Precautions.

## Model/Specifications

Specifications	Model	Resin handle	AS3500-02	AS3500-03
		Metal handle	AS3500-02-2	AS3500-03-2
Port size			1/4	3/8
Fluid	Air			
Proof pressure	1.5 MPa			
Max. operating pressure	1 MPa			
Min. operating pressure	0.05 MPa			
Ambient and fluid temperature	-5 to 60°C (No freezing)			
Weight	130 g (Metallic handle: 140 g)			
Free flow	Flow rate (L/min (ANR))	810		
	Sonic conductance dm <sup>3</sup> /(s·bar)	2.3		
	Critical pressure ratio	0.35		
Controlled flow	Flow rate (L/min (ANR))	810		
	Sonic conductance dm <sup>3</sup> /(s·bar)	2.3		
	Critical pressure ratio	0.2		

## How to Order

AS3500 - [ ] 02 - [ ]

### Thread type

Nil	Rc
N	NPT
F	G

### Material for handle

Nil	Resin
2	Metal

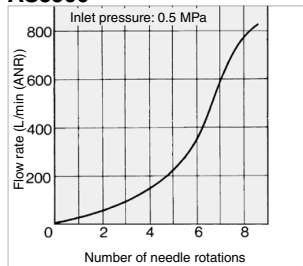
### Port size

02	1/4
03	3/8

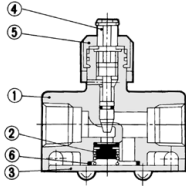
## Needle Valve/ Flow Rate Characteristics

Note) The flow rate characteristics are representative values.

### AS3500



## Construction



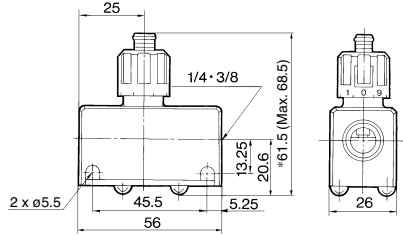
## Component Parts

No.	Description	Material
1	Body	Aluminum alloy
2	Valve	NBR
3	Cap	Rolled steel
4	Needle	Brass
5	Handle	POM
		Zinc alloy

## Replacement Parts

No.	Description	Material	Part no.
6	O-ring	NBR	14284

## Dimensions



\* Reference dimensions

AS-F

TMH

ASD

**AS**

AS-FE

KE

AS-FG

AS-FP

AS-FM

AS-D

AS-T

ASP

ASN

AQ

ASV

AK

VCHC

ASR

ASQ