

3 Port Solenoid Valve

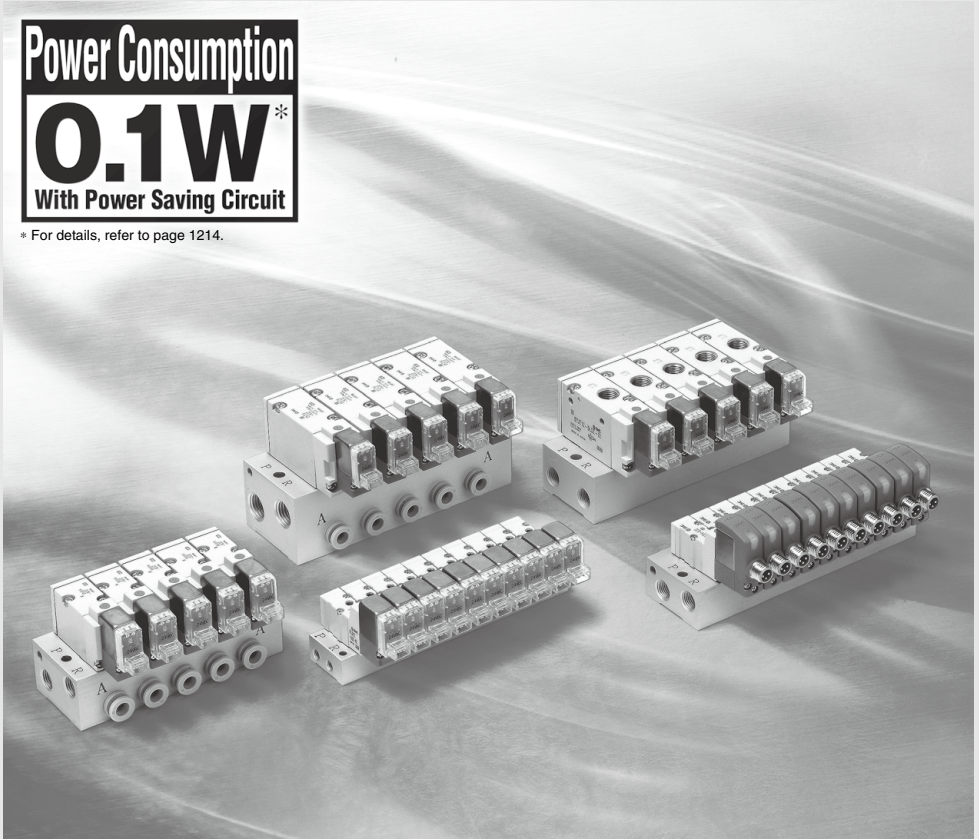
SYJ300/500/700 Series

Rubber Seal

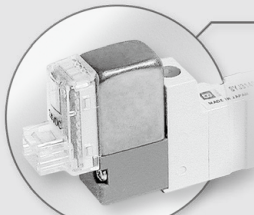
CE
[Option]

Power Consumption
0.1W*
With Power Saving Circuit

* For details, refer to page 1214.



SYJ
VQZ
VP
VG
VP3



Cover (stainless steel)

● Improved pilot valve


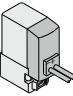

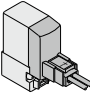

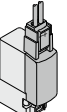


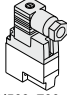

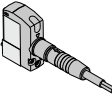
Pilot valve cover is stronger using stainless steel.
Mounting thread is also reinforced from size M1.7 to M2.

● Flow Rate Characteristics

Series	Flow rate characteristics		
	C [dm ³ /(s·bar)]	b	Cv
SYJ300	0.36	0.31	0.089
SYJ500	1.2	0.41	0.32
SYJ700	2.7	0.38	0.72

Rubber Seal 3 Port Solenoid Valve **SYJ300/500/700 Series**

Variations

	Series	Port size	Sonic conductance C [dm ³ /(s·bar)]	Type of actuation	Voltage	Electrical entry	Option	Manual override		
							Light/Surge voltage suppressor			
Body ported	SYJ300  P.1160	M3 x 0.5	[Effective area 0.9 mm ² { 2→3 } { (A→R) }]	● N.C. ● N.O.	For DC ■ 24 VDC 12 VDC 6 VDC 5 VDC 3 VDC	Grommet 	For DC ■ With surge voltage suppressor ■ With light/surge voltage suppressor	■ Non-locking push type		
	SYJ500  P.1174	M5 x 0.8	0.66 { 2→3 } { (A→R) }			L plug connector 				
	SYJ700  P.1192	1/8	2.5 { 2→3 } { (A→R) }			M plug connector 				
Base mounted	SYJ300  P.1160	M5 x 0.8	0.36 { 2→3 } { (A→R) }			For AC ■ 100 VAC $\frac{50}{60}$ Hz 110 VAC $\frac{50}{60}$ Hz 200 VAC $\frac{50}{60}$ Hz 220 VAC $\frac{50}{60}$ Hz			For AC (Note) ■ With light/surge voltage suppressor	■ Push-turn locking slotted type
	SYJ500  P.1174	1/8	1.2 { 2→3 } { (A→R) }			DIN terminal  (SYJ500, 700 only)				
	SYJ700  P.1192	1/8, 1/4	2.7 { 2→3 } { (A→R) }			M8 connector 				

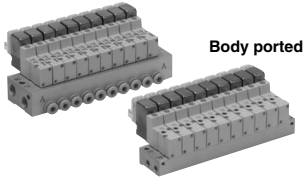
Note) All AC voltage models have built-in surge voltage suppressor.

Manifold Variations

Valve series	A port location	P, R ports size	A port size								
			M3	M5	1/8	With One-touch fitting					
						Applicable tubing O.D.					
			ø4	ø6	ø8	N3	N7	N9			
Body ported	SYJ300 P.1166	Top	M5 x 0.8	● ^{Note 1)}	—	—	—	—	—	—	—
		1/8	● ^{Note 2)}	—	—	—	—	—	—	—	
	SYJ500 P.1180	Top	1/8	—	●	—	—	—	—	—	—
Base mounted	SYJ700 P.1198	Top	1/8	—	—	● ^{Note 1)}	—	—	—	—	—
		1/4	—	—	●	—	—	—	—	—	
	SYJ300 P.1166	Side	M5 x 0.8	● ^{Note 1)}	—	—	—	—	—	—	—
		1/8	—	●	—	●	—	—	●	—	—
	SYJ500 P.1180	Bottom	1/8	—	●	●	—	—	—	—	—
		Side		—	●	●	●	●	—	●	●
	SYJ700 P.1198	Bottom	1/8	—	—	● ^{Note 1)}	—	—	—	—	—
1/4		—	—	●	—	—	—	—	—	—	
Side	1/4	—	—	●	—	●	●	—	●	●	

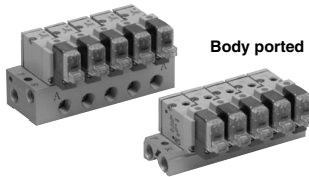
Note 1) Only for internal pilot
 Note 2) Only for external pilot

Base mounted



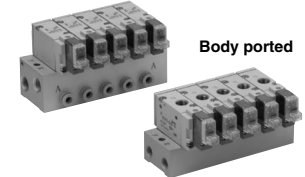
SYJ300 series

Base mounted



SYJ500 series

Base mounted



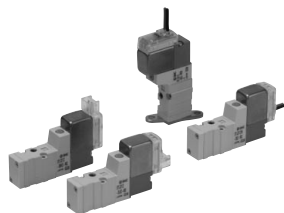
SYJ700 series

- SYJ**
- VQZ**
- VP**
- VG**
- VP3**

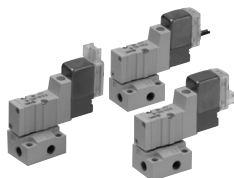
Rubber Seal 3 Port Pilot Solenoid Valve **SYJ300 Series**



Specifications



Body ported



Base mounted

Fluid		Air
Operating pressure range (MPa)	Internal pilot	0.15 to 0.7
Ambient and fluid temperature (°C)		-10 to 50 (No freezing.)
Response time ms (at 0.5 MPa) ^{Note 1)}		15 or less
Max. operating frequency (Hz)		10
Manual override (Manual operation)		Non-locking push type, push-turn locking slotted type, push-turn locking lever type
Pilot exhaust method		Individual exhaust for the pilot valve, common exhaust for the pilot and main valve
Lubrication		Not required
Mounting orientation		Unrestricted
Impact/Vibration resistance (m/s²) ^{Note 2)}		150/30
Enclosure		Dust proof (* M8 connector conforms to IP65.)

* Based on IEC60529

Note 1) Based on dynamic performance test, JIS B 8419: 2010. (Coil temperature: 20°C, at rated voltage, without surge voltage suppressor.)

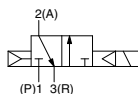
Note 2) Impact resistance: No malfunction occurred when it is tested in the axial direction and at the right angles to the main valve and armature in both energized and de-energized states every once for each condition. (Value in the initial state)

Vibration resistance: No malfunction occurred in one sweep test between 45 and 2000 Hz. Test was performed at both energized and de-energized states in the axial direction and at the right angles to the main valve and armature. (Value in the initial state)

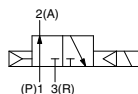
Symbol

Internal pilot

SYJ31 $\frac{1}{2}$

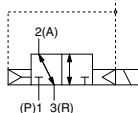


SYJ32 $\frac{1}{2}$

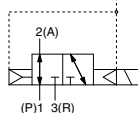


External pilot

SYJ31 $\frac{1}{2}$ R



SYJ32 $\frac{1}{2}$ R



Solenoid Specifications

Electrical entry		Grommet (G), (H), L plug connector (L), M plug connector (M), M8 connector (W)	
Coil rated voltage (V)	DC	24, 12, 6, 5, 3	
	AC 50/60 Hz	100, 110, 200, 220	
Allowable voltage fluctuation		±10% of rated voltage *	
Power consumption (W)	DC	Standard	0.35 (With light: 0.4)
		With power saving circuit	0.1 (With light only) * [Starting 0.4, Holding 0.1]
Apparent power (VA) *	AC	100 V	0.78 (With light: 0.81)
		110 V	0.86 (With light: 0.89)
		[115 V]	[0.94 (With light: 0.97)]
		200 V	1.18 (With light: 1.22)
		220 V	1.30 (With light: 1.34)
		[230 V]	[1.42 (With light: 1.46)]
Surge voltage suppressor		Diode (Varistor when non-polar types)	
Indicator light		LED	

* In common between 110 VAC and 115 VAC, and between 220 VAC and 230 VAC.

* For 115 VAC and 230 VAC, the allowable voltage is -15% to +5% of rated voltage.

* For details, refer to page 1214.



Made to Order

(For details, refer to pages 1210 and 1211)

Flow Rate Characteristics/Weight

Valve model		Type of actuation	Port size	Flow rate characteristics						Effective area (mm ²)	Weight (g) ^(Note)		
				1→2 (P→A)			2→3 (A→R)				Grommet	L/M plug connector	M8 connector
				C [dm ³ /(s bar)]	b	Cv	C [dm ³ /(s bar)]	b	Cv				
Body ported	SYJ312	N.C.	M3 x 0.5	—	—	—	—	—	—	0.9	32	33	37
	SYJ322	N.O.		—	—	—	—	—	—				
Base mounted (with sub-plate)	SYJ314	N.C.	M5 x 0.8	0.41	0.18	0.086	0.35	0.33	0.086	—	53 (32)	54 (33)	58 (37)
	SYJ324	N.O.		0.36	0.31	0.089	0.36	0.31	0.089				

Note) Value for DC. Add 1 g for AC. (): Without sub-plate.

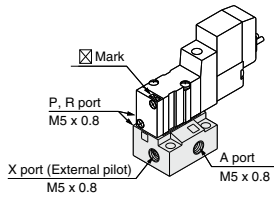
External Pilot

SYJ300R

Pilot valve pressure is supplied separately from the main valve pressure through the use of a separate supply port. It can be used in the vacuum (up to -100 kPa) or low pressure line with 0.15 MPa or less.

Specifications

Applicable model	Base mounted (SYJ314R, SYJ324R)	
Operating pressure range MPa	Main pressure	-100 kPa to 0.7
	External pilot pressure	0.15 to 0.7



Note 1) For manifold base, refer to page 1166.

Note 2) External pilot type body ported valves (SYJ3□2R) can only be used on the manifold.

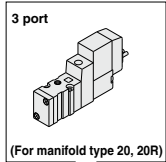
SYJ

VQZ

VP

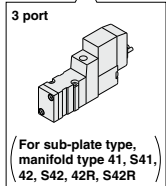
VG

VP3

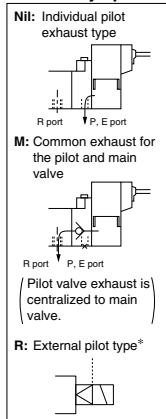


Body ported SYJ3 1 2 □ □ - 5 M □ □ - M3 - □ □

Base mounted SYJ3 1 4 □ □ - 5 M □ □ - □ □ - □ □



Body option



* SYJ3□2R is only for manifold use.

Rated voltage

DC	CE-compliant
5	24 VDC ●
6	12 VDC ●
V	6 VDC ●
S	5 VDC ●
R	3 VDC ●

AC (50/60 Hz)	CE-compliant
1	100 VAC —
2	200 VAC —
3	110 VAC [115 VAC] —
4	220 VAC [230 VAC] —

* For type W□, DC voltage is only available.
Note) CE-compliant: For DC only.

Type of actuation

1	Normally closed
2	Normally open

Coil specifications

Nil	Standard
T	With power saving circuit (24, 12 VDC only)

* Power saving circuit is not available in the case of W□ type.

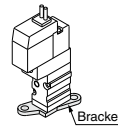
Light/Surge voltage suppressor

Nil	Without light/surge voltage suppressor
S	With surge voltage suppressor
Z	With light/surge voltage suppressor
R	With surge voltage suppressor (Non-polar type)
U	With light/surge voltage suppressor (Non-polar type)

* For AC voltage valves there is no "S" option. It is already built-in to the rectifier circuit.
* For type R, U, DC voltage is only available.
* Power saving circuit is only available in the "Z" type.

Bracket

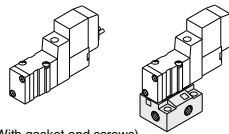
Nil: Without bracket
F : With bracket



* Bracket is mounted.
* Brackets cannot be retrofitted.
* External pilot type is not available.

Port size

Nil: Without sub-plate M5: M5 port With sub-plate



CE-compliant

Nil	—
Q	CE-compliant

Note) CE-compliant: For DC only.

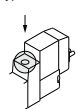
Electrical entry

24, 12, 6, 5, 3 VDC/100, 110, 200, 220 VAC				24, 12, 6, 5, 3 VDC	
Grommet	L plug connector	M plug connector		M8 connector	
G: Lead wire length 300 mm	L: With lead wire (Length 300 mm)	M: With lead wire (Length 300 mm)	MN: Without lead wire	WO: Without connector cable	
H: Lead wire length 600 mm	LN: Without lead wire	LO: Without connector	MO: Without connector	W□: With connector cable Note 1)	

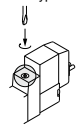
* LN, MN type: with 2 sockets.
* Refer to page 1213 for the lead wire length of L and M plug connectors.
* Refer to page 1216 for the connector assembly with cover for L and M plug connectors.
* For connector cable of M8 connector, refer to page 1217.
* A M8 connector conforming to IEC60947-5-2 is also available. Refer to page 1210 for details.
Note 1) Enter the cable length symbols in □. Please be sure to fill in the blank referring to page 1217.

Manual override

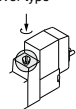
Nil: Non-locking push type



D: Push-turn locking slotted type

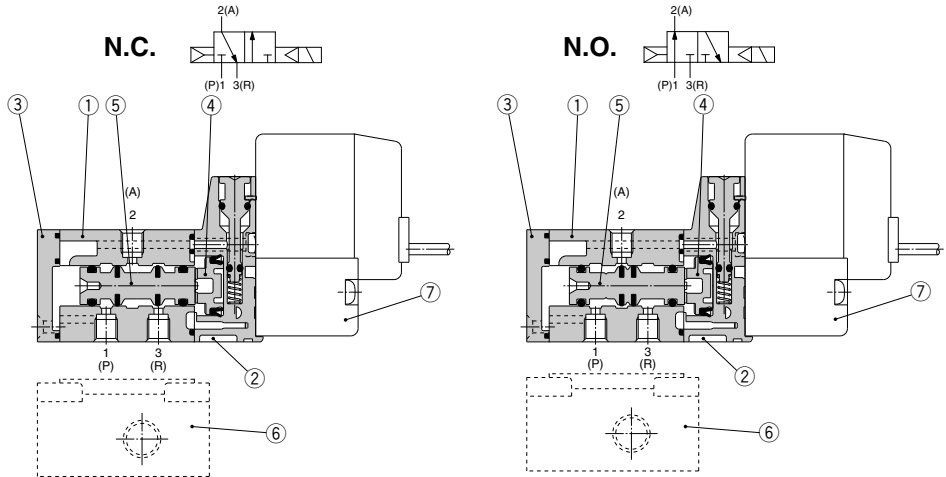


E: Push-turn locking lever type



Note) When placing an order for body ported solenoid valve as a single unit, mounting screws for manifold and gasket are not attached. Order them separately, if necessary. (For details, refer to page 1167.)

Construction



Component Parts

No.	Description	Material	Note
1	Body	Zinc die-casted	White
2	Piston plate	Resin	White
3	End cover	Resin	White
4	Piston	Resin	—
5	Spool valve assembly	Aluminum, H-NBR	—

Replacement Parts

No.	Description	Part no.	Note
6	Sub-plate ^{Note)}	SYJ300-9-1(-Q)	Zinc die-casted
7	Pilot valve	V111(T)-□□□□	

Note) Add suffix "Q" for the CE-compliant product.

How to Order Pilot Valve Assembly

V111 □ — 5 G □ □

Coil specifications

Nil	Standard
T	With power saving circuit (24, 12 VDC only)

* Power saving circuit is not available in the case of W□ type.

Rated voltage

5	24 VDC
6	12 VDC
V	6 VDC
S	5 VDC
R	3 VDC
1	100 VAC 50/60 Hz
2	200 VAC 50/60 Hz
3	110 VAC 50/60 Hz [115 VAC 50/60 Hz]
4	220 VAC 50/60 Hz [230 VAC 50/60 Hz]

* For type W□, DC voltage is only available.

* CE-compliant: For DC only.

Light/Surge voltage suppressor

Nil	Without light/surge voltage suppressor
S	With surge voltage suppressor
Z	With light/surge voltage suppressor
R	With surge voltage suppressor (Non-polar type)
U	With light/surge voltage suppressor (Non-polar type)

* For AC voltage valves there is no "S" option. It is already built-in to the rectifier circuit.
* For "R" and "U", DC voltage is only available.
* Power saving circuit is only available in the "Z" type.

Electrical entry

G	Grommet, 300 mm lead wire
H	Grommet, 600 mm lead wire
L	With lead wire
LN	L plug connector Without lead wire
LO	Without connector
M	With lead wire
MN	M plug connector Without lead wire
MO	Without connector
WO	M8 connector Without connector cable
W□	With connector cable ^{Note 1)}

* For connector cable of M8 connector, refer to page 1217.

Note 1) Enter the cable length symbols in □. Please be sure to fill in the blank referring to page 1217.

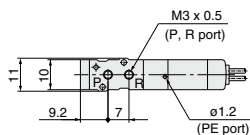
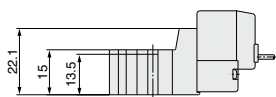
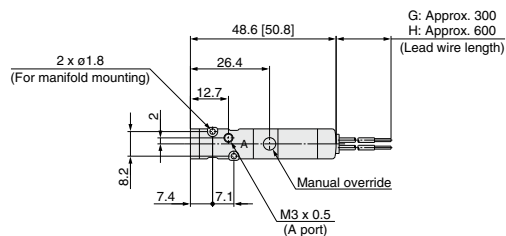
Note) Since V111 is CE-compliant as standard, the suffix "Q" is not necessary.

SYJ300 Series

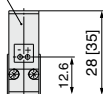
Body Ported

* [] for AC

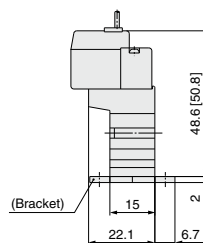
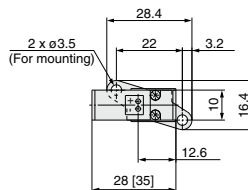
Grommet (G), (H): SYJ3□2-□^G□□-M3



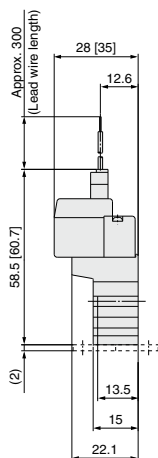
(Light/surge voltage suppressor)



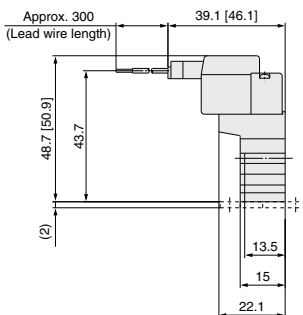
With bracket: SYJ3□2-□^G□□-M3-F



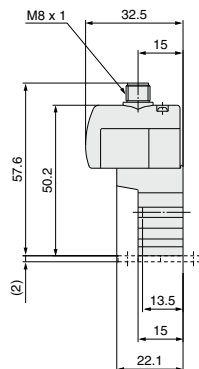
L plug connector (L): SYJ3□2-□L□□-M3



M plug connector (M): SYJ3□2-□M□□-M3



M8 connector (WO): SYJ3□2-□WO□□-M3

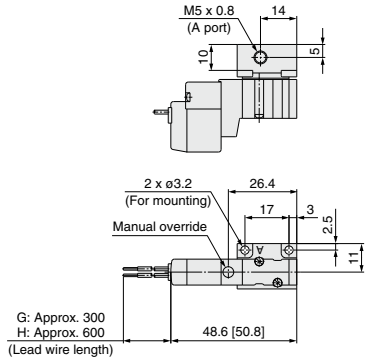


* Refer to page 1217 for dimensions with connector cable.

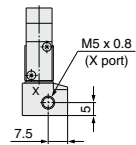
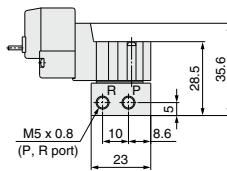
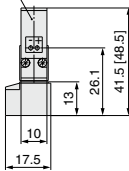
Base Mounted (With Sub-plate)

* [] for AC

Grommet (G), (H): SYJ3□4-□^G□□-M5



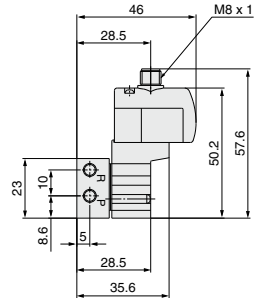
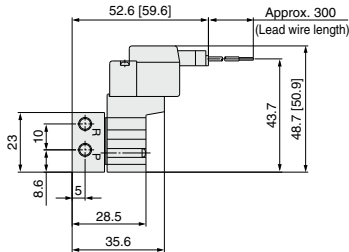
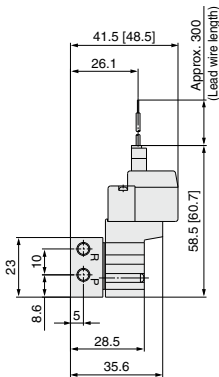
(Light/surge voltage suppressor)



L plug connector (L):
SYJ3□4-□L□□-M5

M plug connector (M):
SYJ3□4-□M□□-M5

M8 connector (WO):
SYJ3□4-□WO□□-M5



* Refer to page 1217 for dimensions with connector cable.

SYJ

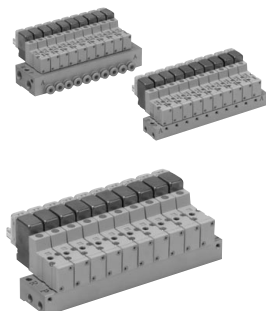
VQZ

VP

VG

VP3

SYJ300 Series Manifold Specifications



Manifold Specifications

Model	For internal pilot	Type 20	Type 41, S41	Type 42, S42
	For external pilot	Type 20R	—	Type 42R, S42R
Manifold type		Single base/B mount		
P (SUP), R (EXH)		Common SUP/Common EXH		
Valve stations		2 to 20 stations		
A port	Location	Valve	Base	
	Direction	Top	Side	
Porting specifications	P, R port	$\frac{M5 \times 0.8}{\varnothing}$	M5 x 0.8	$\frac{1}{8}$
		A port	M3 x 0.5	M3 x 0.5
	X port <small>Note</small>	M5 x 0.8	—	M5 x 0.8

Note) Only for external pilot

Flow Rate Characteristics

Manifold			Port size		Flow rate characteristics						Effective area (mm ²)
					1→2 (P→A)			2→3 (A→R)			
					C [dm ³ /(s·bar)]	b	Cv	C [dm ³ /(s·bar)]	b	Cv	
Body ported for internal pilot	Type SS3YJ3-20	SYJ3□2	M5 x 0.8	M3 x 0.5	—	—	—	—	—	—	0.9
	Type SS3YJ3-41 S41	SYJ3□4	M5 x 0.8	M3 x 0.5	—	—	—	—	—	—	1.5
Base mounted for internal pilot	Type SS3YJ3-42-M5	SYJ3□4	1/8	M5 x 0.8	0.31	0.17	0.075	0.32	0.11	0.072	—
	C4			0.33	0.36	0.086	0.33	0.2	0.082	—	
	Type SS3YJ3-S42-M5	SYJ3□4	1/8	M5 x 0.8	0.32	0.3	0.079	0.33	0.35	0.086	—
	C4			0.35	0.17	0.082	0.35	0.26	0.086	—	
Body ported for external pilot	Type SS3YJ3-20R	SYJ3□2R	1/8	M3 x 0.5	—	—	—	—	—	—	0.9
	Type SS3YJ3-42R-M5	SYJ3□4R	1/8	M5 x 0.8	0.31	0.17	0.075	0.32	0.11	0.072	—
Type SS3YJ3-42R-C4	C4			0.33	0.36	0.086	0.33	0.20	0.082	—	
Type SS3YJ3-S42R-M5	M5 x 0.8			0.32	0.30	0.079	0.33	0.35	0.086	—	
Type SS3YJ3-S42R-C4	C4			0.35	0.17	0.082	0.35	0.26	0.086	—	

Note) Value at manifold base mounted, 2 position single acting

How to Order Manifold (Example)

Instruct by specifying the valves and blanking plate assembly to be mounted on the manifold along with the manifold base model no.

(Example)

SS3YJ3-20-03 1 set (manifold base) SS3YJ3-42R-03-C4 1 set (manifold base)

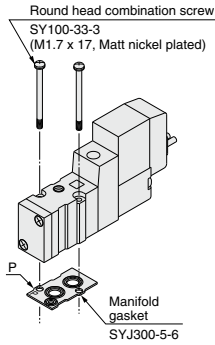
* SYJ312-5LZ-M3 2 sets (valve) * SYJ314R-5G 2 sets (valve)

* SYJ300-10-7A 1 set (blanking plate assembly) * SYJ300-10-7A 1 set (blanking plate assembly)

↳ The asterisk denotes the symbol for assembly. Prefix it to the part nos. of the solenoid valve, etc.

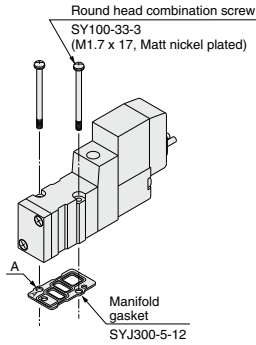
Combinations of Solenoid Valve, Manifold Gasket and Manifold Base

Body ported (Type SYJ3□2(R)-(-Q))



Applicable base
SS3YJ3-20(-Q) | Manifold
SS3YJ3-20R(-Q) | base

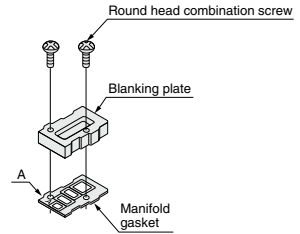
Base mounted (Type SYJ3□4(R)-(-Q))



Applicable base
Sub-plate
SS3YJ3-41(-Q)
SS3YJ3-S41(-Q)
SS3YJ3-42(-Q)
SS3YJ3-S42(-Q)
SS3YJ3-42R(-Q)
SS3YJ3-S42R(-Q) } Manifold
base

Blanking Plate Assembly

Part no.: SYJ300-10-7A(-Q)



Applicable base
Sub-plate
SS3YJ3-20(-Q)
SS3YJ3-20R(-Q)
SS3YJ3-41(-Q)
SS3YJ3-S41(-Q)
SS3YJ3-42(-Q)
SS3YJ3-S42(-Q)
SS3YJ3-42R(-Q)
SS3YJ3-S42R(-Q) } Manifold
base

Note) Add suffix "-Q" for the CE-compliant product.

Caution

Mounting screw tightening torques

M1.7: 0.12 N·m

Use caution to the assembly orientation for solenoid valves, gasket and optional parts.

SYJ

VQZ

VP

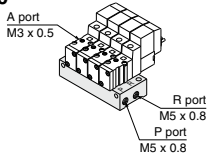
VG

VP3

Manifold for Internal Pilot Type

Note) CE-compliant:
For DC only. [Option]

Type 20



How to Order

SS3YJ3 - 20 - 05 - [] - []

Stations	Bracket	CE-compliant
02 2 stations	Nil Without bracket	Nil —
:	:	:
20 20 stations	F With bracket	Q CE-compliant

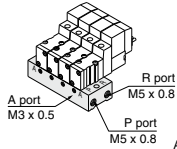
Applicable solenoid valve
SYJ312-□□□□-M3(-Q)
SYJ312M-□□□□-M3(-Q)
SYJ322-□□□□-M3(-Q)
SYJ322M-□□□□-M3(-Q)

Applicable blanking plate assembly
Refer to page 1167.

Note) For more than 10 stations, supply air to both sides of P port and exhaust air from both sides of R port.

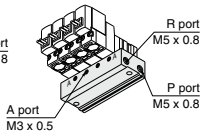
Type 41

Type 41



Type S41

(Pilot valve is on the A port side.)



How to Order

SS3YJ3 - [] - 41 - 05 - M3 - []

Valve mounting direction	Stations	CE-compliant
Nil Pilot valve is opposite the A port side.	02 2 stations	Nil —
S Pilot valve is on the A port side.	:	Q CE-compliant
	20 20 stations	

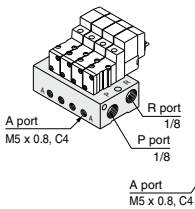
Applicable solenoid valve
SYJ314-□□□□(-Q)
SYJ314M-□□□□(-Q)
SYJ324-□□□□(-Q)
SYJ324M-□□□□(-Q)

Applicable blanking plate assembly
Refer to page 1167.

Note) For more than 10 stations, supply air to both sides of P port and exhaust air from both sides of R port.

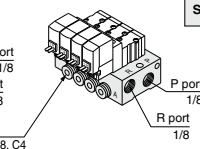
Type 42

Type 42



Type S42

(Pilot valve is on the A port side.)



How to Order

SS3YJ3 - [] - 42 - 05 - M5 - [] - []

Valve mounting direction	Stations	A port size	P, R port thread type	CE-compliant
Nil Pilot valve is opposite the A port side.	02 2 stations	M5 M5 x 0.8	Nil Rc	Nil —
S Pilot valve is on the A port side.	:	C4 ø4 One-touch fitting	F G	Q CE-compliant
	20 20 stations	N3 ø5/32" One-touch fitting	N NPT	
			T NPTF	

Applicable solenoid valve
SYJ314-□□□□(-Q)
SYJ314M-□□□□(-Q)
SYJ324-□□□□(-Q)
SYJ324M-□□□□(-Q)

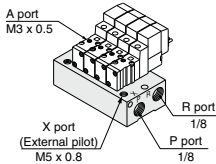
Applicable blanking plate assembly
Refer to page 1167.

Note) For more than 8 stations, supply/exhaust air to/from both sides of P port and R port.

Manifold for External Pilot Type

Pilot valve pressure is supplied separately from the main valve pressure through the use of a separate supply port. It can be used in the vacuum (up to -100 kPa) or low pressure line with 0.15 MPa or less.

Type 20R



How to Order

SS3YJ3 - 20R - 05 - [] - []

Stations	P, R port thread type	CE-compliant
02 2 stations	Nil Rc	Nil —
:	00F G	Q CE-compliant
20 20 stations	00N NPT	
	00T NPTF	

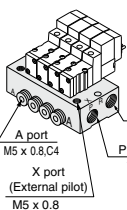
Applicable solenoid valve
SYJ312R-□□□□-M3(-Q)
SYJ322R-□□□□-M3(-Q)

Applicable blanking plate assembly
Refer to page 1167.

Note) For more than 10 stations, supply/exhaust air to/from both sides of P port and R port.

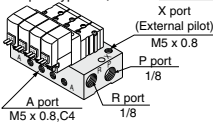
Type 42R

Type 42R
(External pilot type)



Type S42R

(Pilot valve is on the A port side and is of the external pilot type.)



How to Order

SS3YJ3 - [] - 42R - 05 - M5 - [] - []

Valve mounting direction	Stations	A port size	P, R port thread type	CE-compliant
Nil Pilot valve is opposite the A port side.	02 2 stations	M5 M5 x 0.8	Nil Rc	Nil —
S Pilot valve is on the A port side.	:	C4 ø4 One-touch fitting	F G	Q CE-compliant
	20 20 stations	N3 ø5/32" One-touch fitting	N NPT	
			T NPTF	

Applicable solenoid valve
SYJ314R-□□□□(-Q)
SYJ324R-□□□□(-Q)

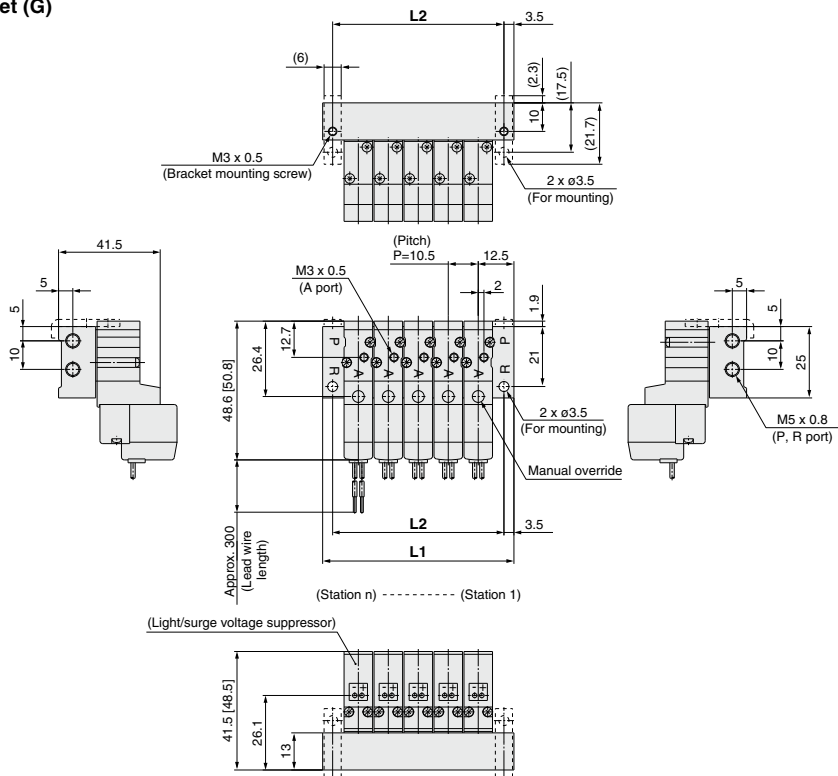
Applicable blanking plate assembly
Refer to page 1167.

Note) For more than 8 stations, supply/exhaust air to/from both sides of P port and R port.

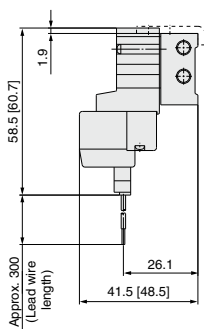
Type 20 Manifold: Top Ported/SS3YJ3-20-**Stations**-00□ (-F)

* [] for AC

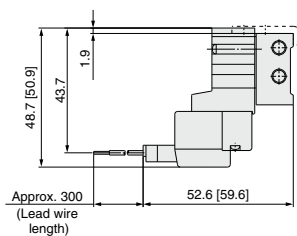
Grommet (G)



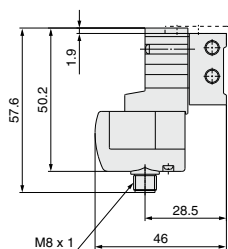
L plug connector (L)



M plug connector (M)



M8 connector (WO)



* Refer to page 1217 for dimensions with connector cable.

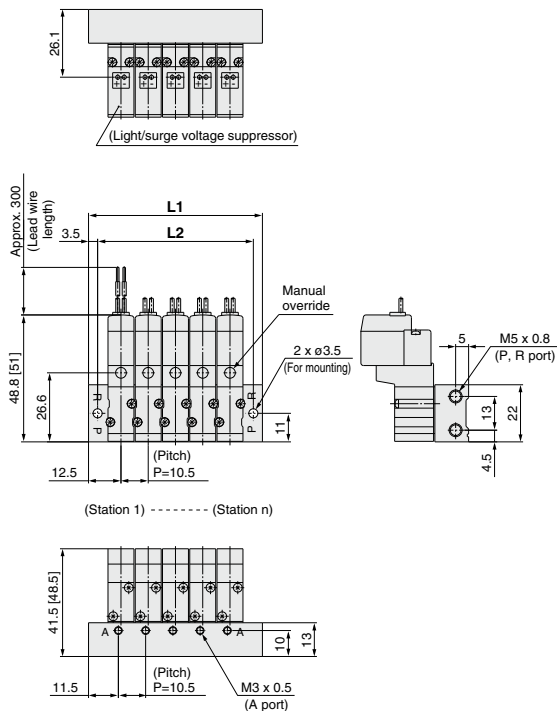
Station n	2	3	4	5	6	7	8	9	10	11	12	13	14	15	16	17	18	19	20
L1	35.5	46	56.5	67	77.5	88	98.5	109	119.5	130	140.5	151	161.5	172	182.5	193	203.5	214	224.5
L2	28.5	39	49.5	60	70.5	81	91.5	102	112.5	123	133.5	144	154.5	165	175.5	186	196.5	207	217.5

SYJ300 Series

Type 41 Manifold: Side Ported/SS3YJ3-41-Stations-M3

* [] for AC

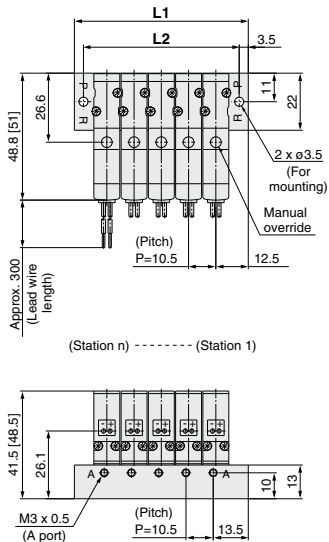
Grommet (G)



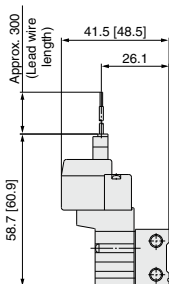
Type S41 Manifold: Side Ported

(Pilot valve is on the A port side) /

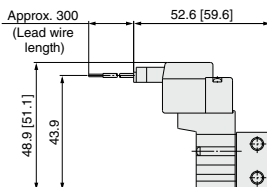
SS3YJ3-S41-Stations-M3



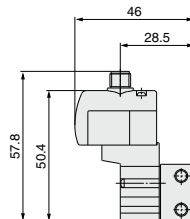
L plug connector (L)



M plug connector (M)



M8 connector (WO)



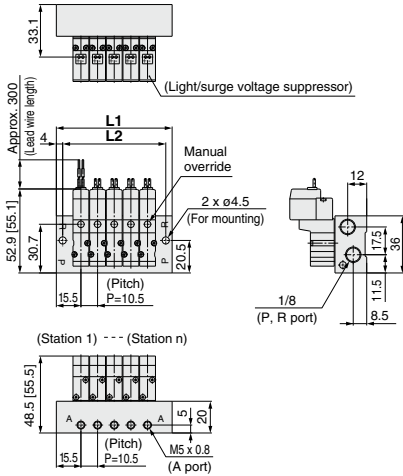
* Refer to page 1217 for dimensions with connector cable.

Station n	Station 2	3	4	5	6	7	8	9	10	11	12	13	14	15	16	17	18	19	Station 20
L1	35.5	46	56.5	67	77.5	88	98.5	109	119.5	130	140.5	151	161.5	172	182.5	193	203.5	214	224.5
L2	28.5	39	49.5	60	70.5	81	91.5	102	112.5	123	133.5	144	154.5	165	175.5	186	196.5	207	217.5

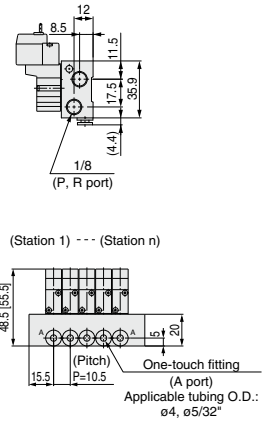
Type 42 Manifold: Side Ported/SS3YJ3-42- Stations -M5, **C4** **N3** □

* [] for AC

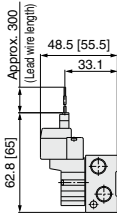
Grommet (G)
For M5



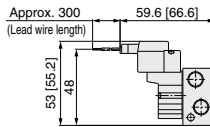
For **C4** **N3** □ (Built-in One-touch fitting)



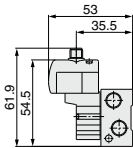
L plug connector (L)



M plug connector (M)



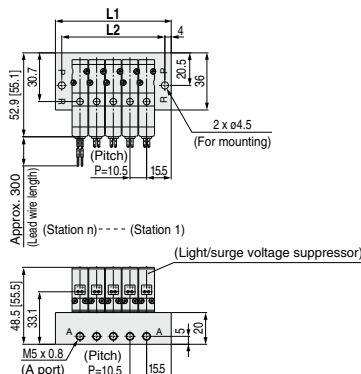
M8 connector (WO)



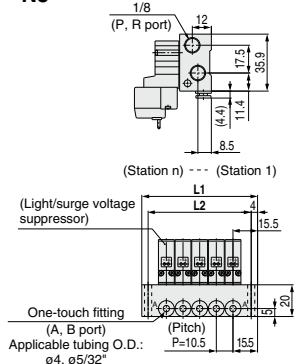
* Refer to page 1217 for dimensions with connector cable.

Type S42 Manifold: Side Ported (Pilot valve is on the A port side) / SS3YJ3-S42- Stations -M5, **C4** **N3** □

Grommet (G)
For M5



For **C4** **N3** □ (Built-in One-touch fitting)



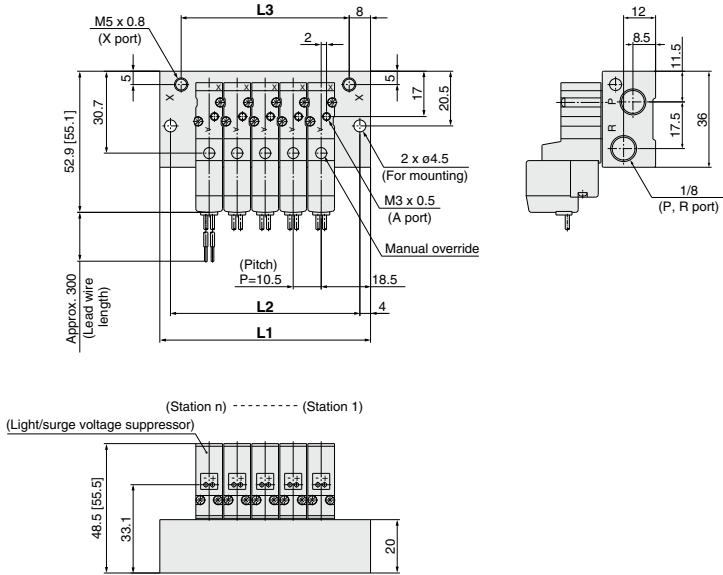
Station n	Station 2	3	4	5	6	7	8	9	10	11	12	13	14	15	16	17	18	19	Station 20
L1	41.5	52	62.5	73	83.5	94	104.5	115	125.5	136	146.5	157	167.5	178	188.5	199	209.5	220	230.5
L2	33.5	44	54.5	65	75.5	86	96.5	107	117.5	128	138.5	149	159.5	170	180.5	191	201.5	212	222.5

SYJ300 Series

Type 20R Manifold: Top Ported (External Pilot Type)/SS3YJ3-20R- **Stations** -00 □

* [] for AC

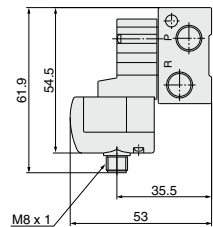
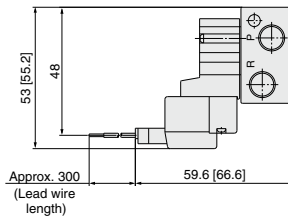
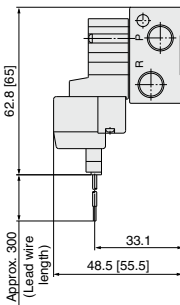
Grommet (G)



L plug connector (L)

M plug connector (M)

M8 connector (WO)

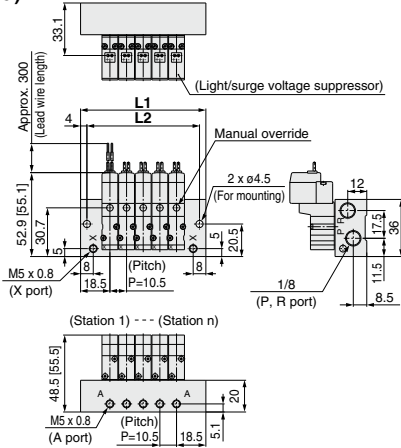


* Refer to page 1217 for dimensions with connector cable.

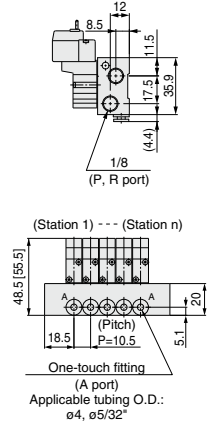
Station n	Station 2	3	4	5	5	7	8	9	10	11	12	13	14	15	16	17	18	19	Station 20
L1	47.5	58	68.5	79	89.5	100	110.5	121	131.5	142	152.5	163	173.5	184	194.5	205	215.5	226	236.5
L2	39.5	50	60.5	71	81.5	92	102.5	113	123.5	134	144.5	155	165.5	176	186.5	197	207.5	218	228.5
L3	31.5	42	52.5	63	73.5	84	94.5	105	115.5	126	136.5	147	157.5	168	178.5	189	199.5	210	220.5

Type 42R Manifold: Side Ported (External Pilot Type)/SS3YJ3-42R-**Stations**-M5, **C4** **N3** □ * [] for AC

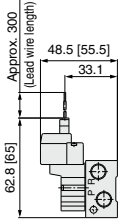
Grommet (G)
For M5



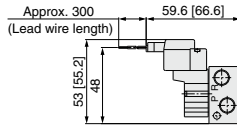
For **C4** **N3** □ (Built-in One-touch fitting)



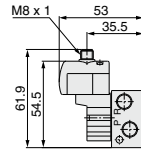
L plug connector (L)



M plug connector (M)



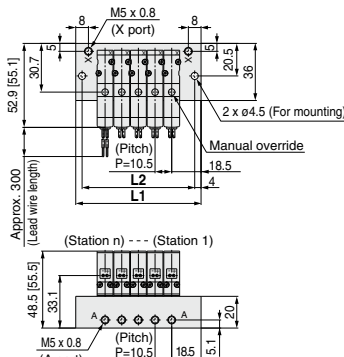
M8 connector (WO)



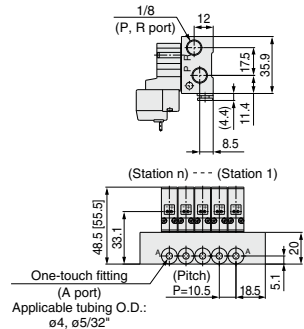
* Refer to page 1217 for dimensions with connector cable.

Type S42R Manifold: Side Ported (Pilot valve is on the A port side) / SS3YJ3-S42R-**Stations**-M5, **C4** **N3** □

Grommet (G)
For M5



For **C4** **N3** □ (Built-in One-touch fitting)

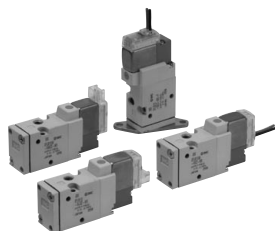


Station n	Station 2	3	4	5	6	7	8	9	10	11	12	13	14	15	16	17	18	19	Station 20
L1	47.5	58	68.5	79	89.5	100	110.5	121	131.5	142	152.5	163	173.5	184	194.5	205	215.5	226	236.5
L2	39.5	50	60.5	71	81.5	92	102.5	113	123.5	134	144.5	155	165.5	176	186.5	197	207.5	218	228.5

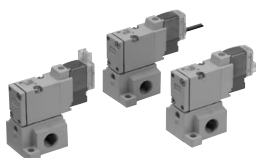
Rubber Seal 3 Port Pilot Solenoid Valve **SYJ500 Series**



Specifications



Body ported



Base mounted

Fluid		Air
Operating pressure range (MPa)	Internal pilot	0.15 to 0.7
Ambient and fluid temperature (°C) –10 to 50 (No freezing.)		
Response time ms (at 0.5 MPa) ^{Note 1)} 25 or less		
Max. operating frequency (Hz) 5		
Manual override (Manual operation)		Non-locking push type, push-turn locking slotted type, push-turn locking lever type
Pilot exhaust method Individual exhaust for the pilot valve, common exhaust for the pilot and main valve		
Lubrication Not required		
Mounting orientation Unrestricted		
Impact/Vibration resistance (m/s²) ^{Note 2)} 150/30		
Enclosure		Dust proof (* DIN terminal, M8 connector conforms to IP65.)

* Based on IEC60529

Note 1) Based on dynamic performance test, JIS B 8419: 2010. (Coil temperature: 20°C, at rated voltage, without surge voltage suppressor.)

Note 2) Impact resistance: No malfunction occurred when it is tested in the axial direction and at the right angles to the main valve and armature in both energized and de-energized states every once for each condition. (Value in the initial state)

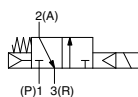
Vibration resistance: No malfunction occurred in one sweep test between 45 and 2000 Hz. Test was performed at both energized and de-energized states in the axial direction and at the right angles to the main valve and armature. (Value in the initial state)

Solenoid Specifications

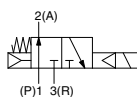
Symbol

Internal pilot

SYJ51 $\frac{2}{4}$

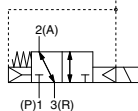


SYJ52 $\frac{2}{4}$

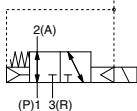


External pilot

SYJ51 $\frac{2}{4}$ R



SYJ52 $\frac{2}{4}$ R



Electrical entry		Grommet (G), (H), L plug connector (L), M plug connector (M), DIN terminal (D), (Y), M8 connector (W)	
Coil rated voltage (V)	DC	G, H, L, M, W	D, Y
	AC 50/60 Hz	24, 12, 6, 5, 3	24, 12
Allowable voltage fluctuation		±10% of rated voltage *	
Power consumption (W)	DC	Standard	0.35 (With light: 0.4 (DIN terminal with light: 0.45))
		With power saving circuit	0.1 (With light only) * [Starting 0.4, Holding 0.1]
Apparent power (VA) *	AC	100 V	0.78 (With light: 0.81) 0.78 (With light: 0.87)
		110 V	0.86 (With light: 0.89) 0.86 (With light: 0.97)
		[115 V]	[0.94 (With light: 0.97)] [0.94 (With light: 1.07)]
		200 V	1.18 (With light: 1.22) 1.15 (With light: 1.30)
		220 V [230 V]	1.30 (With light: 1.34) 1.27 (With light: 1.46) [1.42 (With light: 1.46)] [1.39 (With light: 1.60)]
Surge voltage suppressor		Diode (DIN terminal, varistor when non-polar types)	
Indicator light		LED (Neon light when AC with DIN terminal)	

* In common between 110 VAC and 115 VAC, and between 220 VAC and 230 VAC.

* For 115 VAC and 230 VAC, the allowable voltage is –15% to +5% of rated voltage.

* For details, refer to page 1214.



Made to Order

(For details, refer to pages 1210 and 1211.)

Flow Rate Characteristics/Weight

Valve model		Type of actuation	Port size	Flow rate characteristics						Weight (g) ^{Note)}			
				1→2 (P→A)			2→3 (A→R)			Grommet	L/M plug connector	DIN terminal	M8 connector
			C [dm ³ /(s·bar)]	b	Cv	C [dm ³ /(s·bar)]	b	Cv					
Body ported	SYJ512	N.C.	M5 x 0.8	0.53	0.45	0.14	0.47	0.39	0.12	46	47	68	51
	SYJ522	N.O.		0.66	0.45	0.18	0.66	0.45	0.18				
Base mounted (with sub-plate)	SYJ514	N.C.	1/8	1.2	0.41	0.32	1.1	0.46	0.32	60 (46)	61 (47)	82 (68)	65 (51)
	SYJ524	N.O.		1.3	0.37	0.33	1.2	0.48	0.34				

Note) Value for DC. Add 3 g for AC. (): Without sub-plate.

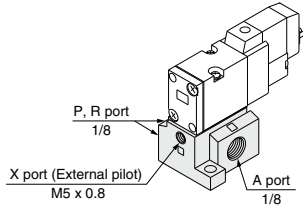
External Pilot

SYJ500R

Pilot valve pressure is supplied separately from the main valve pressure through the use of a separate supply port. It can be used in the vacuum (up to -100 kPa) or low pressure line with 0.15 MPa or less.

Specifications

Applicable model	Base mounted (SYJ514R, SYJ524R)	
Operating pressure range MPa	Main pressure	-100 kPa to 0.7
	External pilot pressure	0.15 to 0.7



Note 1) For manifold base, refer to page 1180.

Note 2) External pilot type body ported valves (SYJ5□2R) can only be used on the manifold. For body ported models with the external pilot option, please refer to page 1211.

SYJ

VQZ

VP

VG

VP3



How to Order

Rated voltage

DC	
5	24 VDC
6	12 VDC
V	6 VDC
S	5 VDC
R	3 VDC

* DC specifications of type D, Y, DO and YO is only available with 12 and 24 VDC.

AC (50/60 Hz)	
1	100 VAC
2	200 VAC
3	110 VAC [115 VAC]
4	220 VAC [230 VAC]

* For type W□, DC voltage is only available.
Note) AC-type models that are CE-compliant have DIN terminals only.

Type of actuation

1	Normally closed
2	Normally open

Light/Surge voltage suppressor

Electrical entry for G, H, L, M and W

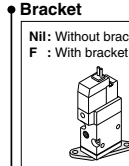
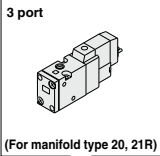
Nil	Without light/surge voltage suppressor
S	With surge voltage suppressor
Z	With light/surge voltage suppressor
R	With surge voltage suppressor (Non-polar type)
U	With light/surge voltage suppressor (Non-polar type)

* For AC voltage valves there is no "S" option. It is already built-in to the rectifier circuit.
* For type "R" and "U", DC voltage is only available.
* Power saving circuit is only available in the "Z" type.

Electrical entry for D, Y

Nil	Without light/surge voltage suppressor
S	With surge voltage suppressor (Non-polar type)
Z	With light/surge voltage suppressor (Non-polar type)

* DOZ and YOZ are not available.
* For AC voltage valves there is no "S" option. It is already built-in to the rectifier circuit.



* Bracket is not mounted.

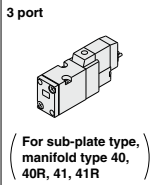


Made to Order
(page 1211)
Body ported external pilot

Body ported



Base mounted

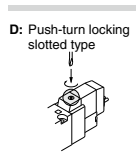
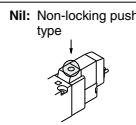


Coil specifications

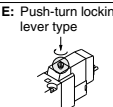
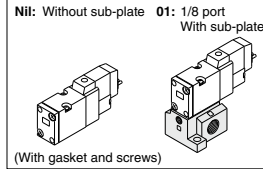
Nil	Standard
T	With power saving circuit (24, 12 VDC only)

* Power saving circuit is not available in the case of D, Y, DO, YO or W□ type.

Manual override



Port size



Thread type

Nil	Rc
F	G
N	NPT
T	NPTF

CE-compliant

Nil	—
Q	CE-compliant

Note) AC-type models that are CE-compliant have DIN terminals only.

Body option

Nil: Individual pilot exhaust type



M: Common exhaust for the pilot and main valve



R: External pilot type*



Electrical entry

CE-compliant	DC	24, 12, 6, 5, 3 VDC/100, 110, 200, 220 VAC						24, 12 VDC/100, 110, 200, 220 VAC		24, 12, 6, 5, 3 VDC
		Grommet	L plug connector	M plug connector		DIN terminal		M8 connector		
		G: Lead wire length 300 mm	L: With lead wire (Length 300 mm)	M: With lead wire (Length 300 mm)	MN: Without lead wire	D: With connector	Y: With connector	WO: Without connector cable		
		H: Lead wire length 600 mm	LN: Without lead wire	LO: Without connector	MO: Without connector	DO: Without connector	YO: Without connector	WI: With connector cable (Note 1)		

Note) When placing an order for body ported solenoid valve as a single unit, mounting screws for manifold and gasket are not attached. Order them separately, if necessary. (For details, refer to page 1181.)

* LN, MN type: with 2 sockets.

* Refer to page 1213 for the lead wire length of L and M plug connectors.

* Refer to page 1216 for the connector assembly with cover for L and M plug connectors.

* DIN terminal type "Y" which conforms to EN-175301-803C (former DIN43650C) is also available. For details, refer to page 1215.

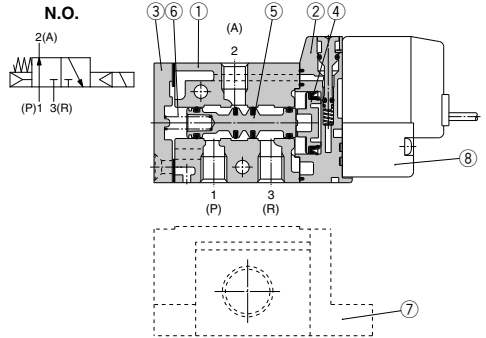
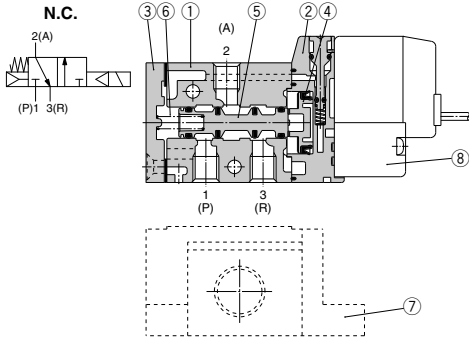
* For connector cable of M8 connector, refer to page 1217.

* A M8 connector conforming to IEC60947-5-2 is also available. Refer to page 1210 for details.

Note 1) Enter the cable length symbols in □. Please be sure to fill in the blank referring to page 1217.

* SYJ5□2R is only for manifold use.

Construction



Component Parts

No.	Description	Material	Note
1	Body	Aluminum die-cast	White
2	Piston plate	Resin	White
3	End cover	Aluminum die-cast	White
4	Piston	Resin	—
5	Spool valve assembly	—	—
6	Spool spring	Stainless steel	—

Replacement Parts

No.	Description	Part no.	Note
7	Sub-plate ^(Note)	SYJ500-9-1(-Q)	Aluminum die-cast
8	Pilot valve	V111(T)-□□□□	—
—	Bracket assembly	SYJ5000-13-3A	—

(Note) Add suffix "-Q" for the CE-compliant product.

How to Order Pilot Valve Assembly

V111 □ — 5 G □

Coil specifications

Nil	Standard
T	With power saving circuit (24, 12 VDC only)

* Power saving circuit is not available in the case of W□ type.

Rated voltage

5	24 VDC
6	12 VDC
V	6 VDC
S	5 VDC
R	3 VDC
1	100 VAC 50/60 Hz
2	200 VAC 50/60 Hz
3	110 VAC 50/60 Hz [115 VAC 50/60 Hz]
4	220 VAC 50/60 Hz [230 VAC 50/60 Hz]

* For type W□, DC voltage is only available.
* CE-compliant: For DC only.

Light/Surge voltage suppressor

Nil	Without light/surge voltage suppressor
S	With surge voltage suppressor
Z	With light/surge voltage suppressor
R	With surge voltage suppressor (Non-polar type)
U	With light/surge voltage suppressor (Non-polar type)

* For AC voltage valves there is no "S" option. It is already built-in to the rectifier circuit.

* For "R" and "U", DC voltage is only available.

* Power saving circuit is only available in the "Z" type.

Electrical entry

G	Grommet, 300 mm lead wire
H	Grommet, 600 mm lead wire
L	With lead wire
LN	Without lead wire
LO	Without connector
M	With lead wire
MN	Without lead wire
MO	Without connector
WO	M8 Without connector cable
W□	connector With connector cable ^(Note 1)

* For connector cable of M8 connector, refer to page 1217.

Note 1) Enter the cable length symbols in □. Please be sure to fill in the blank referring to page 1217.

V115 — 5 D □

Light/Surge voltage suppressor

Nil	Without light/surge voltage suppressor
S	With surge voltage suppressor (Non-polar type)
Z	With light/surge voltage suppressor (Non-polar type)

* DOZ and YOZ are not available.

* For AC voltage valves there is no "S" option. It is already built-in to the rectifier circuit.

Electrical entry

D	DIN terminal	With connector
DO	(Type D)	Without connector
Y	DIN terminal	With connector
YO	(Type Y)	Without connector

* Do not replace V111 (G, H, L, M, W) to V115 (DIN terminal) and vice versa when replacing pilot valve assembly only.

Rated voltage

5	24 VDC
6	12 VDC
1	100 VAC 50/60 Hz
2	200 VAC 50/60 Hz
3	110 VAC 50/60 Hz [115 VAC 50/60 Hz]
4	220 VAC 50/60 Hz [230 VAC 50/60 Hz]

* DC specifications of type D and DO is only available with 12 and 24 VDC.

* Power saving circuit is not available in the case of D or DO type.

(Note) Since V111 and V115 are CE-compliant as standard, the suffix "-Q" is not necessary.

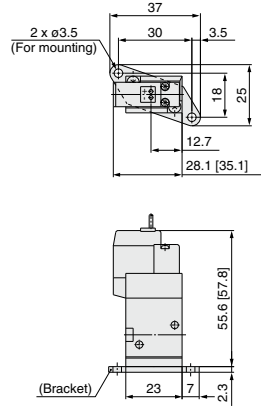
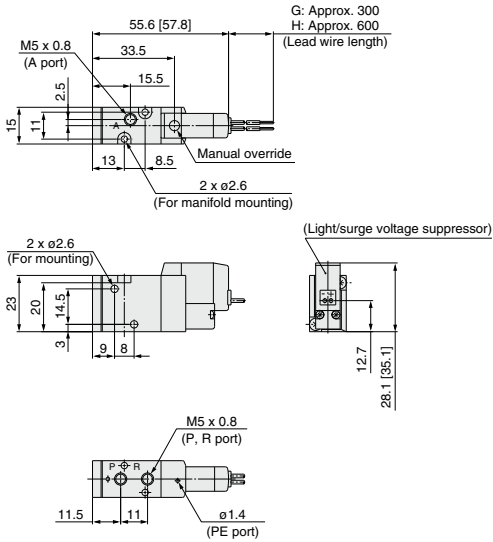
SYJ500 Series

Body Ported

* [] for AC

Grommet (G), (H): SYJ5□2-□^G□□-M5

With bracket:
SYJ5□2-□^G□□-M5-F

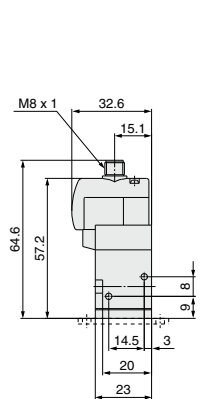
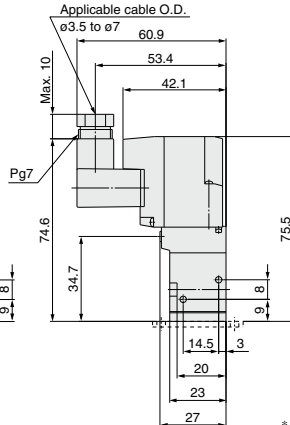
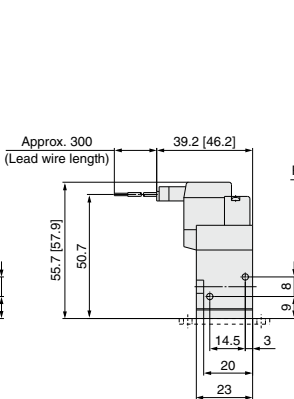
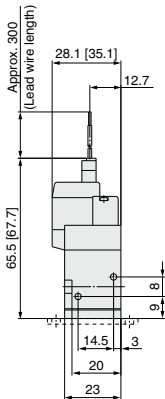


L plug connector (L):
SYJ5□2-□L□□-M5 (-F)

M plug connector (M):
SYJ5□2-□M□□-M5 (-F)

DIN terminal (D,Y):
SYJ5□2-□Y□□-M5 (-F)

M8 connector (WO):
SYJ5□2-□WO□□-M5 (-F)

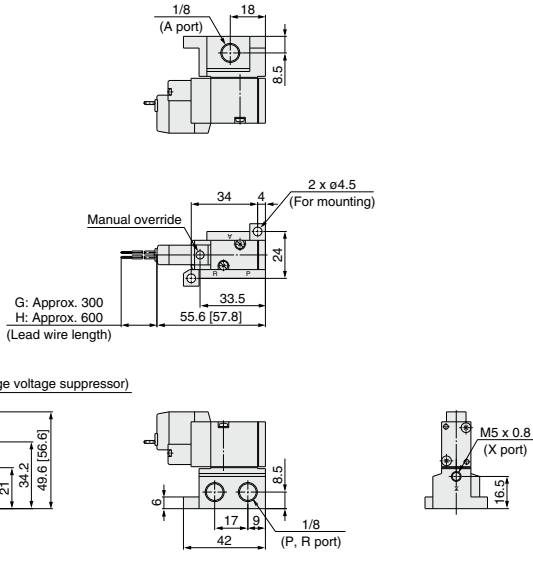


* Refer to page 1217 for dimensions with connector cable.

Base Mounted (With Sub-plate)

* [] for AC

Grommet (G), (H): SYJ5□4-□^G□□-01□

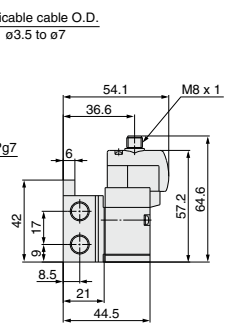
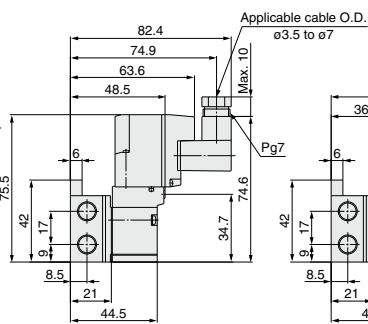
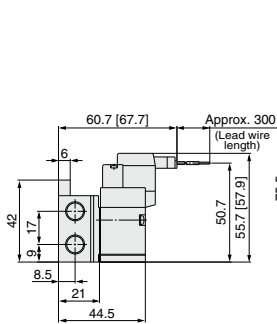
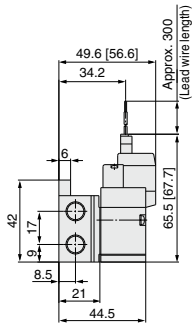


L plug connector (L):
SYJ5□4-□L□□-01□

M plug connector (M):
SYJ5□4-□M□□-01□

DIN terminal (D, Y):
SYJ5□4-□^D□□-01□

M8 connector (WO):
SYJ5□4-□WO□□-01□



* Refer to page 1217 for dimensions with connector cable.

SYJ

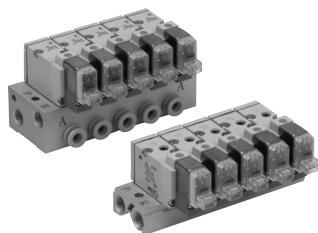
VQZ

VP

VG

VP3

SYJ500 Series Manifold Specifications



Manifold Specifications

Model	For internal pilot	Type 20	Type 40	Type 41
	For external pilot	Type 21R	Type 40R	Type 41R
Manifold type		Single base/B mount		
P (SUP), R (EXH)		Common SUP, common EXH		
Valve stations		2 to 20 stations		
A port Porting specifications	Location	Valve	Base	
	Direction	Top	Bottom	Side
Port size	P, R port	1/8	1/8	1/8
	A port	M5 x 0.8	M5 x 0.8 1/8	M5 x 0.8, 1/8, C4 (One-touch fitting for ø4), C6 (One-touch fitting for ø6)
	X port <small>(Note)</small>	M5 x 0.8	M5 x 0.8	M5 x 0.8

Note) Only for external pilot

Flow Rate Characteristics

Manifold			Port size		Flow rate characteristics					
					1→2 (P→A)			2→3 (A→R)		
			1(P), 3(R) port	2(A) port	C [dm ³ /(sbar)]	b	Cv	C [dm ³ /(sbar)]	b	Cv
Body ported for internal pilot	Type SS3YJ5-20	SYJ5□2	1/8	M5 x 0.8	0.47	0.43	0.13	0.74	0.32	0.19
	Type SS3YJ5-40-M5	SYJ5□4	1/8	M5 x 0.8	0.71	0.52	0.21	0.81	0.28	0.20
Type SS3YJ5-40-Ø1	1/8		1/8	0.98	0.36	0.25	0.92	0.24	0.22	
Type SS3YJ5-41-M5	1/8		M5 x 0.8	0.71	0.49	0.20	0.80	0.23	0.19	
Type SS3YJ5-41-Ø1	1/8		1/8	1.0	0.37	0.26	0.96	0.25	0.24	
Type SS3YJ5-41-C4	1/8		C4	0.68	0.35	0.17	1.0	0.25	0.24	
Type SS3YJ5-41-C6	1/8		C6	1.0	0.27	0.25	1.0	0.30	0.26	
Body ported for external pilot	Type SS3YJ5-21R	SYJ5□2R	1/8	M5 x 0.8	0.47	0.43	0.13	0.74	0.32	0.19
Body mounted for external pilot	Type SS3YJ5-40R-M5	SYJ5□4R	1/8	M5 x 0.8	0.71	0.52	0.21	0.81	0.28	0.20
	Type SS3YJ5-40R-Ø1		1/8	1/8	0.98	0.36	0.25	0.92	0.24	0.22
	Type SS3YJ5-41R-M5		1/8	M5 x 0.8	0.71	0.49	0.20	0.80	0.23	0.19
	Type SS3YJ5-41R-Ø1		1/8	1/8	1.0	0.37	0.26	0.96	0.25	0.24
	Type SS3YJ5-41R-C4		1/8	C4	0.68	0.35	0.17	1.0	0.25	0.24
	Type SS3YJ5-41R-C6		1/8	C6	1.0	0.27	0.25	1.0	0.30	0.26

Note) Value at manifold base mounted, 2 position single operating

How to Order Manifold (Example)

Instruct by specifying the valves and blanking plate assembly to be mounted on the manifold along with the manifold base model no.

(Example)

SS3YJ5-20-03 1 set (manifold base) SS3YJ5-41R-03-C6 1 set (manifold base)
 * SYJ512-5LZ-M5 2 sets (valve) * SYJ514R-5G 2 sets (valve)
 * SYJ500-10-1A 1 set (blanking plate assembly) * SYJ500-10-3A 1 set (blanking plate assembly)

↳ The asterisk denotes the symbol for assembly. Prefix it to the part nos. of the solenoid valve, etc.

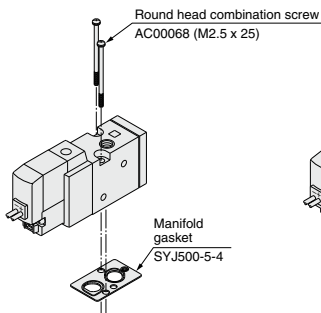
Combinations of Solenoid Valve, Manifold Gasket and Manifold Base

Blanking Plate Assembly

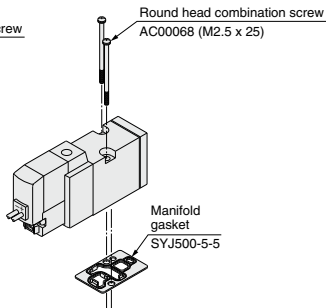
Body ported (Type SYJ5□2(R)(-Q))

Base mounted (Type SYJ5□4(R)(-Q))

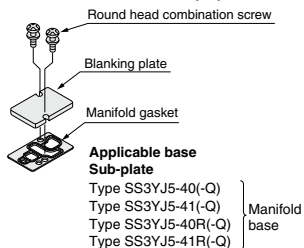
Part no.: SYJ500-10-3A(-Q)



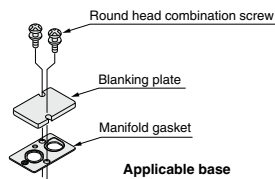
Applicable base
Type SS3YJ5-21R(-Q)
Type SS3YJ5-20(-Q)
Manifold base



Applicable base
Sub-plate
Type SS3YJ5-40(-Q)
Type SS3YJ5-41(-Q)
Type SS3YJ5-40R(-Q)
Type SS3YJ5-41R(-Q) } **Manifold base**



Part no.: SYJ500-10-1A(-Q)



Applicable base
Type SS3YJ5-20(-Q)
Type SS3YJ5-21R(-Q)

(Note) Add suffix "Q" for the CE-compliant product.

⚠ Caution

Mounting screw tightening torques

M2.5: 0.45 N·m

Use caution to the assembly orientation for solenoid valves (blanking plate) and manifold gasket.

SYJ

VQZ

VP

VG

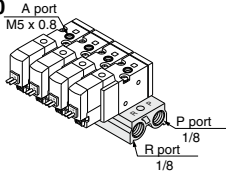
VP3

SYJ500 Series

Note) AC-type models that are CE-compliant have DIN terminals only. [Option]

Manifold for Internal Pilot Type

Type 20



How to Order

SS3YJ5 - 20 - 05 - [] - [] - []

Stations	02 2 Stations	:	:	20 20 Stations
----------	---------------	---	---	----------------

P, R port thread type	Nil Rc	00F G	00N NPT	00T NPTF
-----------------------	--------	-------	---------	----------

Bracket	Nil Without bracket	F With bracket
---------	---------------------	----------------

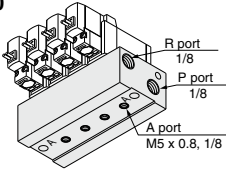
CE-compliant	Nil -	Q CE-compliant
--------------	-------	----------------

Applicable solenoid valve
 SYJ512-□□□□-M5(-Q)
 SYJ512M-□□□□-M5(-Q)
 SYJ522-□□□□-M5(-Q)
 SYJ522M-□□□□-M5(-Q)

Applicable blanking plate assembly
 Refer to page 1181.

Note) For more than 6 stations, supply air to both sides of P port and exhaust air from both sides of R port.

Type 40



How to Order

SS3YJ5 - 40 - 05 M5 - [] - [] - []

Stations	02 2 Stations	:	:	20 20 Stations
----------	---------------	---	---	----------------

A port size	M5 M5 x 0.8	01 1/8
-------------	-------------	--------

P, R port thread type	Nil Rc	F G	N NPT	T NPTF
-----------------------	--------	-----	-------	--------

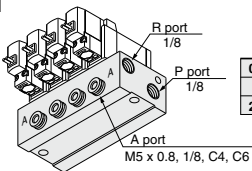
CE-compliant	Nil -	Q CE-compliant
--------------	-------	----------------

Applicable solenoid valve
 SYJ514-□□□□(-Q)
 SYJ514M-□□□□(-Q)
 SYJ524-□□□□(-Q)
 SYJ524M-□□□□(-Q)

Applicable blanking plate assembly
 Refer to page 1181.

Note) For more than 9 stations, supply air to both sides of P port and exhaust air from both sides of R port.

Type 41



How to Order

SS3YJ5 - 41 - 05 - C6 - [] - [] - []

Stations	02 2 Stations	:	:	20 20 Stations
----------	---------------	---	---	----------------

A port size	M5 M5 x 0.8	01 1/8
-------------	-------------	--------

P, R port thread type	Nil Rc	F G	N NPT	T NPTF
-----------------------	--------	-----	-------	--------

CE-compliant	Nil -	Q CE-compliant
--------------	-------	----------------

Applicable solenoid valve
 SYJ514-□□□□(-Q)
 SYJ514M-□□□□(-Q)
 SYJ524-□□□□(-Q)
 SYJ524M-□□□□(-Q)

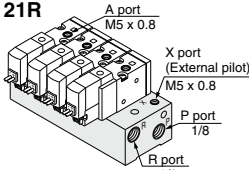
Applicable blanking plate assembly
 Refer to page 1181.

Note) For more than 9 stations, supply air to both sides of P port and exhaust air from both sides of R port.

Manifold for External Pilot Type

Pilot valve pressure is supplied separately from the main valve pressure through the use of a separate supply port. It can be used in the vacuum (up to -100 kPa) or low pressure line with 0.15 MPa or less.

Type 21R



How to Order

SS3YJ5 - 21R - 05 - [] - [] - []

Stations	02 2 Stations	:	:	20 20 Stations
----------	---------------	---	---	----------------

P, R port thread type	Nil Rc	00F G	00N NPT	00T NPTF
-----------------------	--------	-------	---------	----------

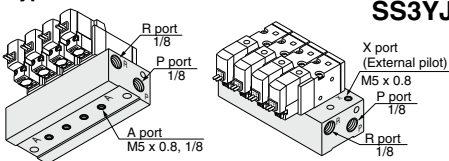
CE-compliant	Nil -	Q CE-compliant
--------------	-------	----------------

Applicable solenoid valve
 SYJ512R-□□□□-M5(-Q)
 SYJ522R-□□□□-M5(-Q)

Applicable blanking plate assembly
 Refer to page 1181.

Note) For more than 9 stations, supply/exhaust air to/from both sides of P and R port.

Type 40R



How to Order

SS3YJ5 - 40R - 05 - 01 - [] - [] - []

Stations	02 2 Stations	:	:	20 20 Stations
----------	---------------	---	---	----------------

A port size	M5 M5 x 0.8	01 1/8
-------------	-------------	--------

P, R port thread type	Nil Rc	F G	N NPT	T NPTF
-----------------------	--------	-----	-------	--------

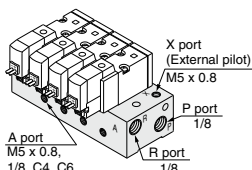
CE-compliant	Nil -	Q CE-compliant
--------------	-------	----------------

Applicable solenoid valve
 SYJ514R-□□□□(-Q)
 SYJ524R-□□□□(-Q)

Applicable blanking plate assembly
 Refer to page 1181.

Note) For more than 9 stations, supply/exhaust air to/from both sides of P and R port.

Type 41R



How to Order

SS3YJ5 - 41R - 05 - M5 - [] - [] - []

Stations	02 2 Stations	:	:	20 20 Stations
----------	---------------	---	---	----------------

A port size	M5 M5 x 0.8	01 1/8
-------------	-------------	--------

P, R port thread type	Nil Rc	F G	N NPT	T NPTF
-----------------------	--------	-----	-------	--------

CE-compliant	Nil -	Q CE-compliant
--------------	-------	----------------

Applicable solenoid valve
 SYJ514R-□□□□(-Q)
 SYJ524R-□□□□(-Q)

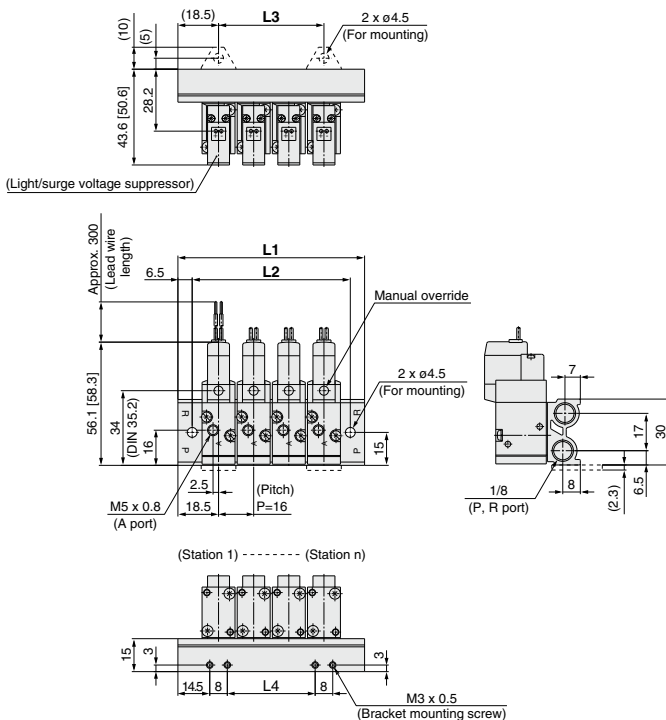
Applicable blanking plate assembly
 Refer to page 1181.

Note) For more than 9 stations, supply/exhaust air to/from both sides of P and R port.

Type 20 Manifold: Top Ported/SS3YJ5-20-**Stations**-00 □ (-F)

* [] for AC

Grommet (G)

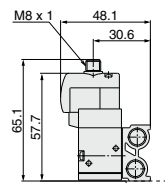
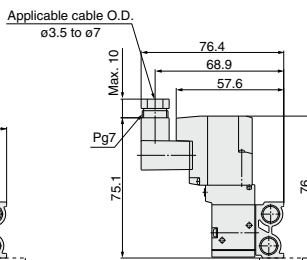
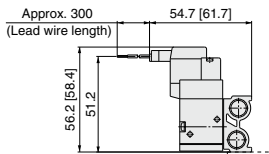
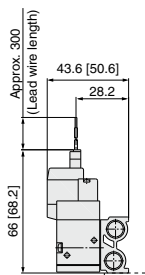


L plug connector (L)

M plug connector (M)

DIN terminal (D, Y)

M8 connector (WO)



* Refer to page 1217 for dimensions with connector cable.

Station n	Station 2	3	4	5	6	7	8	9	10	11	12	13	14	15	16	17	18	19	Station 20
L1	53	69	85	101	117	133	149	165	181	197	213	229	245	261	277	293	309	325	341
L2	40	56	72	88	104	120	136	152	168	184	200	216	232	248	264	280	296	312	328
L3	16	32	48	64	80	96	112	128	144	160	176	192	208	224	240	256	272	288	304
L4	8	24	40	56	72	88	104	120	136	152	168	184	200	216	232	248	264	280	296

SYJ
VQZ
VP
VG
VP3

SYJ500 Series

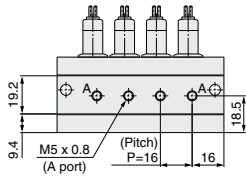
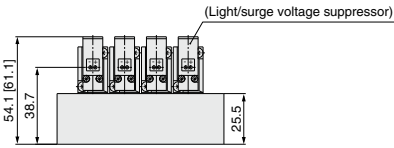
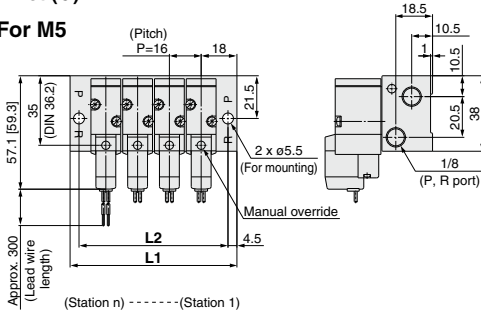
Type 40 Manifold: Bottom Ported/SS3YJ5-40-**Stations**-M5, 01□

* [] for AC

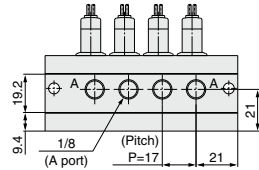
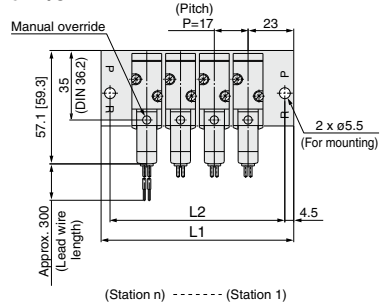
Grommet (G)

For 1/8

For M5



For 1/8

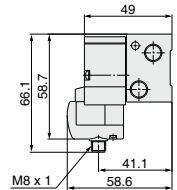
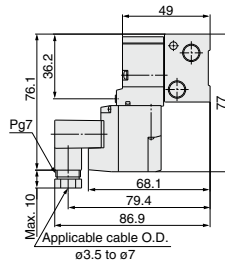
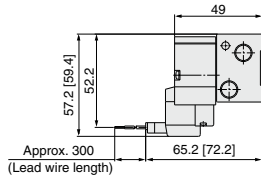
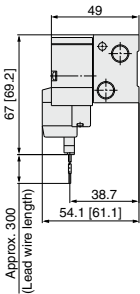


L plug connector (L)

M plug connector (M)

DIN terminal (D, Y)

M8 connector (WO)



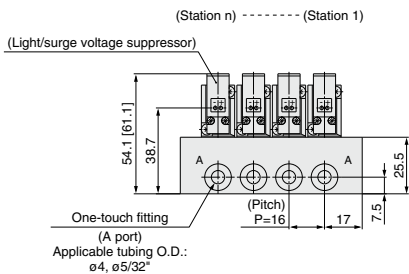
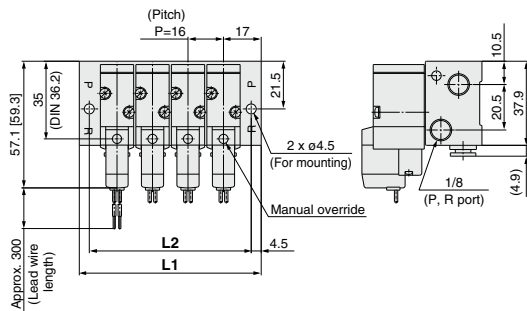
* Refer to page 1217 for dimensions with connector cable.

Port size	Station n	Station 2	3	4	5	6	7	8	9	10	11	12	13	14	15	16	17	18	19	Station 20
M5	L1	52	68	84	100	116	132	148	164	180	196	212	228	244	260	276	292	308	324	340
	L2	43	59	75	91	107	123	139	155	171	187	203	219	235	251	267	283	299	315	331
1/8	L1	63	80	97	114	131	148	165	182	199	216	233	250	267	284	301	318	335	352	369
	L2	54	71	88	105	122	139	156	173	190	207	224	241	258	275	292	309	326	343	360

Type 41 Manifold: Side Ported/SS3YJ5-41- Stations C4, N3
 C6, N7

* [] for AC

Grommet (G)

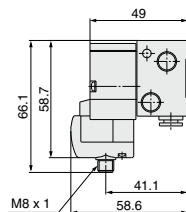
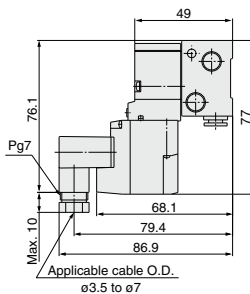
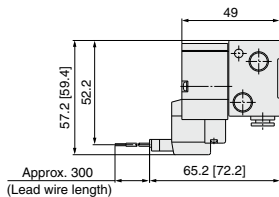
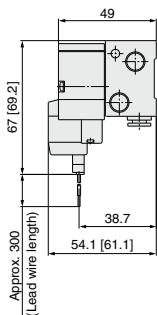


L plug connector (L)

M plug connector (M)

DIN terminal (D, Y)

M8 connector (WO)



- SYJ
- VQZ
- VP
- VG
- VP3

* Refer to page 1217 for dimensions with connector cable.

Port size	Station n	Station 2	3	4	5	6	7	8	9	10	11	12	13	14	15	16	17	18	19	Station 20
One-touch fitting	L1	50	66	82	98	114	130	146	162	178	194	210	226	242	258	274	290	306	322	338
	L2	41	57	73	89	105	121	137	153	169	185	201	217	233	249	265	281	297	313	329

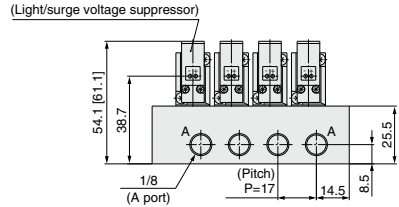
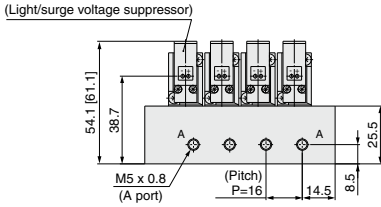
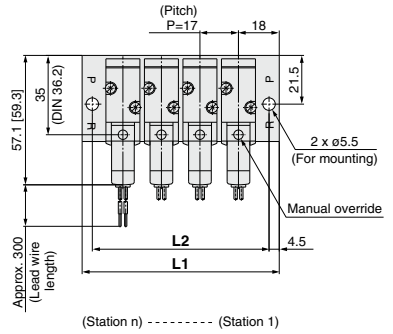
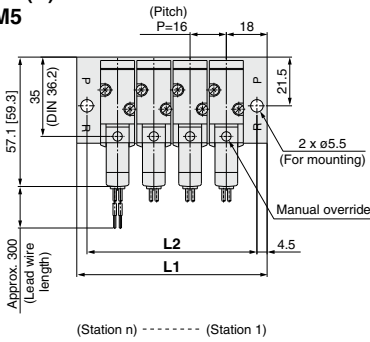
SYJ500 Series

Type 41 Manifold: Side Ported/SS3YJ5-41-**Stations**-M5, 01 □

* [] for AC

Grommet (G) For M5

For 1/8

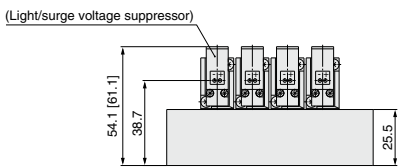
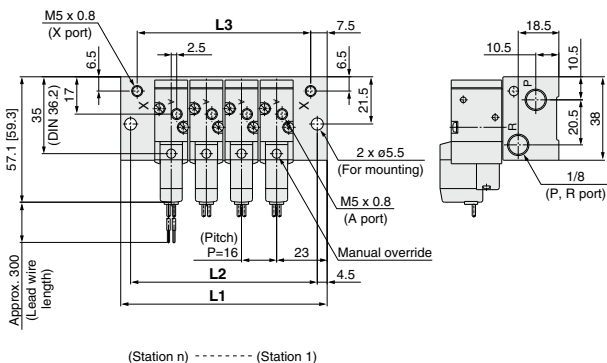


Port size	Station n	Station 2	3	4	5	6	7	8	9	10	11	12	13	14	15	16	17	18	19	Station 20
	M5	L1	52	68	84	100	116	132	148	164	180	196	212	228	244	260	276	292	308	324
	L2	43	59	75	91	107	123	139	155	171	187	203	219	235	251	267	283	299	315	331
1/8	L1	53	70	87	104	121	138	155	172	189	206	223	240	257	274	291	308	325	342	359
	L2	44	61	78	95	112	129	146	163	180	197	214	231	248	265	282	299	316	333	350

Type 21R Manifold: Top Ported (External Pilot Type)/SS3YJ5-21R-**Stations**-00□

* [] for AC

Grommet (G)

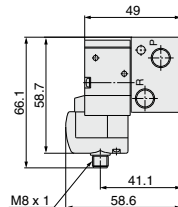
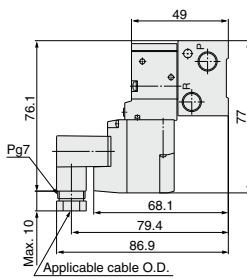
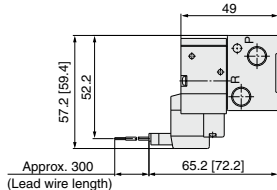
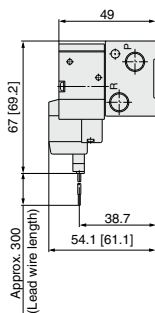


L plug connector (L)

M plug connector (M)

DIN terminal (D, Y)

M8 connector (WO)



* Refer to page 1217 for dimensions with connector cable.

Station n	Station 2	3	4	5	6	7	8	9	10	11	12	13	14	15	16	17	18	19	Station 20
L1	62	78	94	110	126	142	158	174	190	206	222	238	254	270	286	302	318	334	350
L2	53	69	85	101	117	133	149	165	181	197	213	229	245	261	277	293	309	325	341
L3	47	63	79	95	111	127	143	159	175	191	207	223	239	255	271	287	303	319	335

SYJ
VQZ
VP
VG
VP3

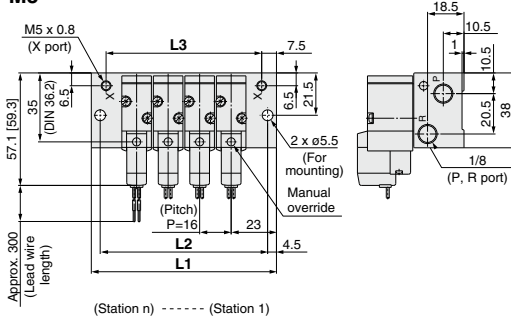
SYJ500 Series

Type 40R Manifold: Bottom Ported (External Pilot Type)/SS3YJ5-40R-**Stations**-M5, 01□

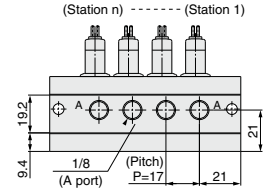
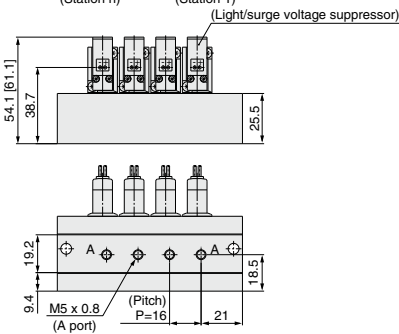
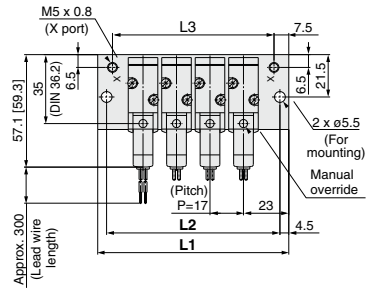
* [] for AC

Grommet (G)

For M5



For 1/8

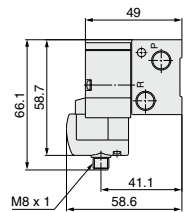
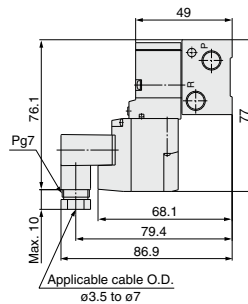
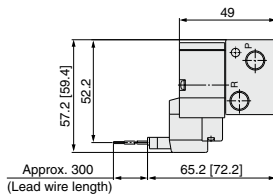
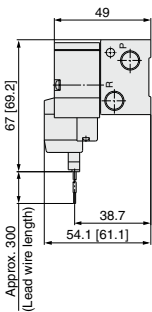


L plug connector (L)

M plug connector (M)

DIN terminal (D, Y)

M8 connector (WO)



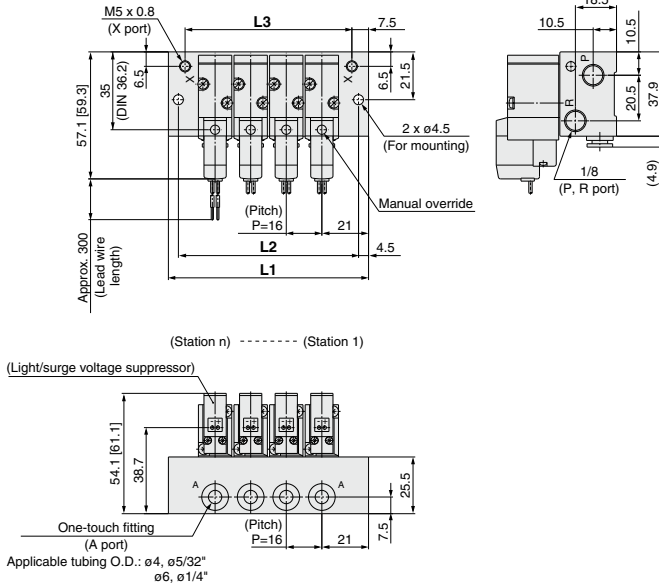
* Refer to page 1217 for dimensions with connector cable.

Port size	Station n	Station 2	3	4	5	6	7	8	9	10	11	12	13	14	15	16	17	18	19	Station 20
M5	L1	62	78	94	110	126	142	158	174	190	206	222	238	254	270	286	302	318	334	350
	L2	53	69	85	101	117	133	149	165	181	197	213	229	245	261	277	293	309	325	341
	L3	47	63	79	95	111	127	143	159	175	191	207	223	239	255	271	287	303	319	335
1/8	L1	63	80	97	114	131	148	165	182	199	216	233	250	267	284	301	318	335	352	369
	L2	54	71	88	105	122	139	156	173	190	207	224	241	258	275	292	309	326	343	360
	L3	48	65	82	99	116	133	150	167	184	201	218	235	252	269	286	303	320	337	354

Type 41R Manifold: Side Ported (External Pilot Type)/SS3YJ5-41R-**Stations** - C4, N3
C6, N7

* [] for AC

Grommet (G)

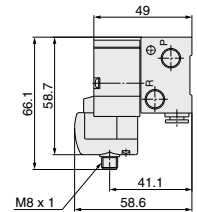
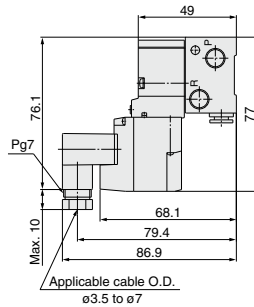
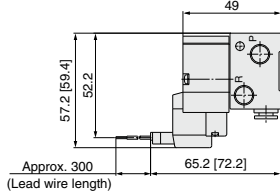
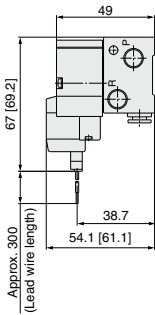


L plug connector (L)

M plug connector (M)

DIN terminal (D, Y)

M8 connector (WO)



* Refer to page 1217 for dimensions with connector cable.

Port size	Station n	Station 2	3	4	5	6	7	8	9	10	11	12	13	14	15	16	17	18	19	Station 20
One-touch fitting	L1	58	74	90	106	122	138	154	170	186	202	218	234	250	266	282	298	314	330	346
	L2	49	65	81	97	113	129	145	161	177	193	209	225	241	257	273	289	305	321	337
	L3	43	59	75	91	107	123	139	155	171	187	203	219	235	251	267	283	299	315	331

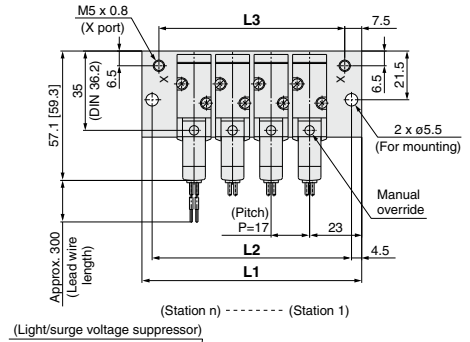
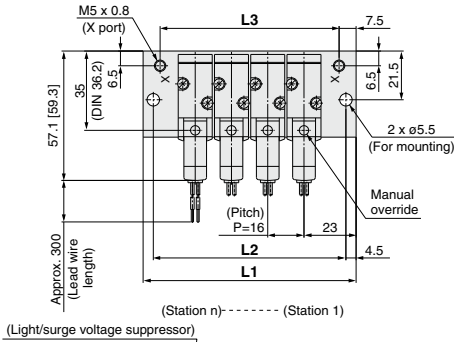
SYJ500 Series

Type 41R Manifold: Side Ported (External Pilot Type)/SS3YJ5-41R-Stations-M5, 01 □

* [] for AC

For M5

For 1/8



Port size	Station n	Station 2	3	4	5	6	7	8	9	10	11	12	13	14	15	16	17	18	19	Station 20
M5	L1	62	78	94	110	126	142	158	174	190	206	222	238	254	270	286	302	318	334	350
	L2	53	69	85	101	117	133	149	165	181	197	213	229	245	261	277	293	309	325	341
	L3	47	63	79	95	111	127	143	159	175	191	207	223	239	255	271	287	303	319	335
1/8	L1	63	80	97	114	131	148	165	182	199	216	233	250	267	284	301	318	335	352	369
	L2	54	71	88	105	122	139	156	173	190	207	224	241	258	275	292	309	326	343	360
	L3	48	65	82	99	116	133	150	167	184	201	218	235	252	269	286	303	320	337	354

SYJ

VQZ

VP

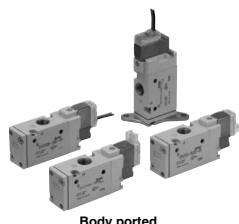
VG

VP3

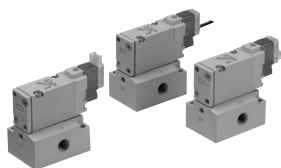
Rubber Seal 3 Port Pilot Solenoid Valve SYJ700 Series



Specifications



Body ported



Base mounted

Fluid		Air
Operating pressure range (MPa)	Internal pilot	0.15 to 0.7
Ambient and fluid temperature (°C)		-10 to 50 (No freezing.)
Response time ms (at 0.5 MPa) ^{Note 1)}		30 or less
Max. operating frequency (Hz)		5
Manual override (Manual operation)		Non-locking push type, push-turn locking slotted type, push-turn locking lever type
Pilot exhaust method		Individual exhaust for the pilot valve, common exhaust for the pilot and main valve
Lubrication		Not required
Mounting orientation		Unrestricted
Impact/Vibration resistance (m/s ²) ^{Note 2)}		150/30
Enclosure		Dust proof (* DIN terminal, M8 connector: IP65)

* Based on IEC60529

Note 1) Based on dynamic performance test, JIS B 8419: 2010. (Coil temperature: 20°C, at rated voltage, without surge voltage suppressor.)

Note 2) Impact resistance: No malfunction occurred when it is tested in the axial direction and at the right angles to the main valve and armature in both energized and de-energized states every once for each condition. (Value in the initial state)

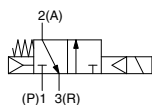
Vibration resistance: No malfunction occurred in one sweep test between 45 and 2000 Hz.

Test was performed at both energized and de-energized states in the axial direction and at the right angles to the main valve and armature. (Value in the initial state)

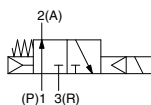
Symbol

Internal pilot

SYJ71 $\frac{2}{4}$

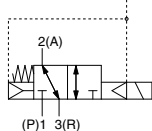


SYJ72 $\frac{2}{4}$

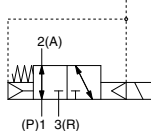


External pilot

SYJ71 $\frac{2}{4}$ R



SYJ72 $\frac{2}{4}$ R



Solenoid Specifications

Electrical entry		Grommet (G), (H), L plug connector (L), M plug connector (M), DIN terminal (D), (Y), M8 connector (W)	
		G, H, L, M, W	D, Y
Coil rated voltage (V)	DC	24, 12, 6, 5, 3	
	AC ^{50/60} Hz	100, 110, 200, 220	
Allowable voltage fluctuation		±10% of rated voltage *	
Power consumption (W)	DC	Standard 0.35 (With light: 0.4 (DIN terminal with light: 0.45))	
	With power saving circuit	0.1 (With light only) * [Starting 0.4, Holding 0.1]	
Apparent power (VA) *	AC	100 V	0.78 (With light: 0.81) 0.78 (With light: 0.87)
		110 V [115 V]	0.86 (With light: 0.89) 0.86 (With light: 0.97) 0.86 (With light: 0.97) 0.86 (With light: 1.07)
		200 V	1.18 (With light: 1.22) 1.15 (With light: 1.30)
		220 V [230 V]	1.30 (With light: 1.34) 1.27 (With light: 1.46) 1.42 (With light: 1.46) 1.39 (With light: 1.60)
Surge voltage suppressor		Diode (DIN terminal, varistor when non-polar types)	
Indicator light		LED (Neon light when AC with DIN terminal)	

* In common between 110 VAC and 115 VAC, and between 220 VAC and 230 VAC.

* For 115 VAC and 230 VAC, the allowable voltage is -15% to +5% of rated voltage.

* For details, refer to page 1214.



Made to Order

(For details, refer to pages 1210 and 1211.)

Flow Rate Characteristics/Weight

Valve model		Type of actuation	Port size	Flow rate characteristics						Weight (g) ^(Note)			
				1→2 (P→A)			2→3 (A→R)			Grommet	L/M plug connector	DIN terminal	M8 connector
				C [dm ³ /(s·bar)]	b	Cv	C [dm ³ /(s·bar)]	b	Cv				
Body ported	SYJ712	N.C.	1/8	2.8	0.43	0.77	2.5	0.51	0.76	75	76	97	80
	SYJ722	N.O.		2.7	0.38	0.72	2.4	0.42	0.69				
Base mounted (with sub-plate)	SYJ714	N.C.	1/8	2.9	0.32	0.71	2.7	0.34	0.69	135 (75)	136 (76)	157 (97)	140 (80)
	SYJ724	N.O.	1/8	2.8	0.21	0.70	2.3	0.45	0.63				
	SYJ714	N.C.	1/4	3.0	0.31	0.74	2.6	0.33	0.66				
	SYJ724	N.O.		2.7	0.31	0.68	2.3	0.48	0.64				

Note) Value for DC. Add 3 g for AC. () : Without sub-plate.

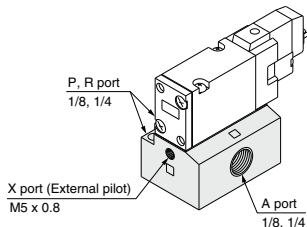
External Pilot

SYJ700R

Pilot valve pressure is supplied separately from the main valve pressure through the use of a separate supply port. It can be used in the vacuum (up to -100 kPa) or low pressure line with 0.15 MPa or less.

Specifications

Applicable model	Base mounted (SYJ714R, SYJ724R)	
Operating pressure range MPa	Main pressure	-100 kPa to 0.7
	External pilot pressure	0.15 to 0.7



- Note 1) For manifold base, refer to page 1198.
 Note 2) External pilot type body ported valves (SYJ7□2R) can only be used on the manifold.
 For body ported models with the external pilot option, please refer to page 1211.

SYJ

VQZ

VP

VG

VP3

How to Order

Rated voltage

DC	5	24 VDC
6	12 VDC	
V	6 VDC	
S	5 VDC	
R	3 VDC	

DC specifications of type D, Y, DO and YO is only available with 12 and 24 VDC.

AC (50/60 Hz)	1	100 VAC
2	200 VAC	
3	110 VAC [115 VAC]	
4	220 VAC [230 VAC]	

* For type W□, DC voltage is only available.
Note) AC-type models that are CE-compliant have DIN terminals only.

Electrical entry for G, H, L, M and W

Nil	Without light/surge voltage suppressor
S	With surge voltage suppressor
Z	With light/surge voltage suppressor
R	With surge voltage suppressor (Non-polar type)
U	With light/surge voltage suppressor (Non-polar type)

* For AC voltage valves there is no "S" option. It is already built-in to the rectifier circuit.
* For type "R" and "U", DC voltage is only available.
* Power saving circuit is only available in the "Z" type.

Electrical entry for D, Y

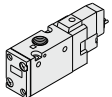
Nil	Without light/surge voltage suppressor
S	With surge voltage suppressor (Non-polar type)
Z	With light/surge voltage suppressor (Non-polar type)

* DOZ and YOZ are not available.
* For AC voltage valves there is no "S" option. It is already built-in to the rectifier circuit.

Type of actuation

1	Normally closed
2	Normally open

3 port



(For manifold type 20, 21R)

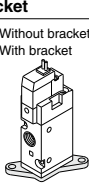
Body ported

SYJ7 1 2 □ □ - 5 M □ □ - 01 □ □ - □ □

Base mounted

SYJ7 1 4 □ □ - 5 M □ □ - 01 □ □ - □ □

3 port



(For sub-plate type, manifold type 40, 41, 41R, 42, 42R)

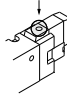
Coil specifications

Nil	Standard
T	With power saving circuit (24, 12 VDC only)

* Power saving circuit is not available in the case of D, Y, DO, YO or W□ type.

Manual override

Nil: Non-locking push type



Thread type

Nil	Rc
F	G
N	NPT
T	NPTF

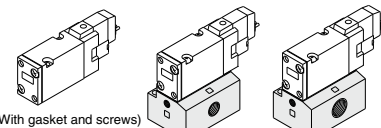
CE-compliant

Nil	—
Q	CE-compliant

Note) AC-type models that are CE-compliant have DIN terminals only.

Port size

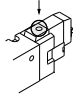
Nil: Without sub-plate 01: 1/8 port With sub-plate 02: 1/4 port With sub-plate



(With gasket and screws)

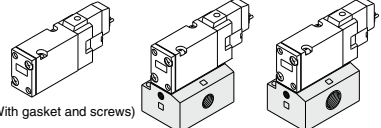
Body option

Nil: Individual pilot exhaust type



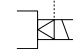
R port P, E port

M: Common exhaust for the pilot and main valve



R port P, E port

R: External pilot type*



Electrical entry

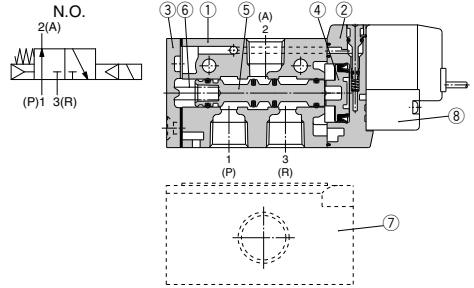
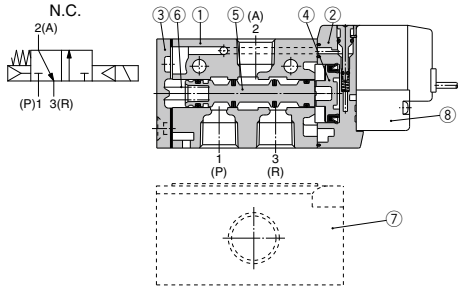
CE-compliant	DC	24, 12, 6, 5, 3 VDC/100, 110, 200, 220 VAC				24, 12 VDC/100, 110, 200, 220 VAC		24, 12, 6, 5, 3 VDC	
		Grommet	L plug connector	M plug connector	DIN terminal	M8 connector	W3 connector	W3 connector	W3 connector
		G: Lead wire length 300 mm	L: With lead wire (Length 300 mm)	M: With lead wire (Length 300 mm)	DN: Without lead wire	D: With connector	Y: With connector	W3: Without connector cable	
		H: Lead wire length 600 mm	LN: Without lead wire	LO: Without connector	MO: Without connector	DO: Without connector	YO: Without connector	W3: With connector cable *Note 1)	

Note) When placing an order for body ported solenoid valve as a single unit, mounting screws for manifold and gasket are not attached. Order them separately, if necessary. (For details, refer to page 1199.)

* LN, MN type: with 2 sockets.
* Refer to page 1213 for the lead wire length of L and M plug connectors.
* Refer to page 1216 for the connector assembly with cover for L and M plug connectors.

* DIN terminal type "Y" which conforms to EN-175301-803C (former DIN4365C) is also available. For details, refer to page 1215.
* For connector cable of M8 connector, refer to page 1217.
* A M8 connector conforming to IEC60947-5-2 is also available. Refer to page 1210 for details.
Note 1) Enter the cable length symbols in □. Please be sure to fill in the blank referring to page 1217.

Construction



Component Parts

No.	Description	Material	Note
1	Body	Aluminum die-casted	White
2	Piston plate	Resin	White
3	End cover	Aluminum die-casted	White
4	Piston	Resin	—
5	Spool valve assembly	—	—
6	Spool spring	Stainless steel	—

Replacement Parts

No.	Description	Part no.	Note
7	Sub-plate ^(Note)	SYJ700-9-1(-Q)	1/8 Aluminum die-casted
		SYJ700-9-2(-Q)	1/4
8	Pilot valve	V111(T)-□□□□	
—	Bracket assembly	SYJ700-19-1A	

Note) Add suffix "-Q" for the CE-compliant product.

How to Order Pilot Valve Assembly

V111 □ — 5 G □

Coil specifications

NII	Standard
T	With power saving circuit (24, 12 VDC only)

* Power saving circuit is not available in the case of W□ type.

Rated voltage

5	24 VDC
6	12 VDC
V	6 VDC
S	5 VDC
R	3 VDC
1	100 VAC 50/60 Hz
2	200 VAC 50/60 Hz
3	110 VAC 50/60 Hz [115 VAC 50/60 Hz]
4	220 VAC 50/60 Hz [230 VAC 50/60 Hz]

* For type W□, DC voltage is only available.
* CE-compliant: For DC only.

Light/Surge voltage suppressor

Nil	Without light/surge voltage suppressor
S	With surge voltage suppressor
Z	With light/surge voltage suppressor
R	With surge voltage suppressor (Non-polar type)
U	With light/surge voltage suppressor (Non-polar type)

* For AC voltage valves there is no "S" option. It is already built-in to the rectifier circuit.
* For "R" and "U", DC voltage is only available.
* Power saving circuit is only available in the "Z" type.

Electrical entry

G	Grommet, 300 mm lead wire
H	Grommet, 600 mm lead wire
L	L plug connector
LN	With lead wire
LO	Without lead wire
M	M plug connector
LN	With lead wire
LO	Without lead wire
M	With connector
MO	Without connector
WO	M8 connector
W□	With connector cable ^(Note 1)

* For connector cable of M8 connector, refer to page 1217.
Note 1) Enter the cable length symbols in □. Please be sure to fill in the blank referring to page 1217.

V115 — 5 D □

Rated voltage

5	24 VDC
6	12 VDC
1	100 VAC 50/60 Hz
2	200 VAC 50/60 Hz
3	110 VAC 50/60 Hz [115 VAC 50/60 Hz]
4	220 VAC 50/60 Hz [230 VAC 50/60 Hz]

* DC specifications of type D and DO is only available with 12 and 24 VDC.
* Power saving circuit is not available in the case of D, Y, DO and YO type.

Light/Surge voltage suppressor

Nil	Without light/surge voltage suppressor
S	With surge voltage suppressor (Non-polar type)
Z	With light/surge voltage suppressor (Non-polar type)

* DOZ and YOZ are not available.
* For AC voltage valves there is no "S" option. It is already built-in to the rectifier circuit.

Electrical entry

D	DIN terminal	With connector
DO	(Type D)	Without connector
Y	DIN terminal	With connector
YO	(Type Y)	Without connector

* Do not replace V111 (G, H, L, M, W) to V115 (DIN terminal) and vice versa when replacing pilot valve assembly only.

Note) Since V111 and V115 are CE-compliant as standard, the suffix "-Q" is not necessary.

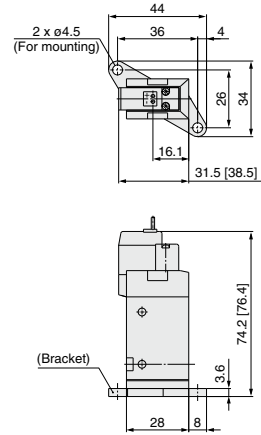
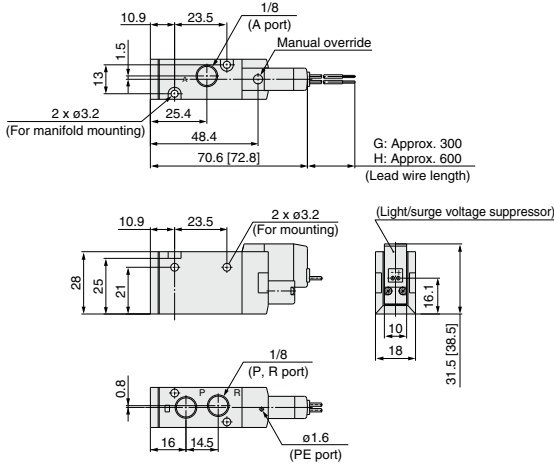
SYJ700 Series

Body Ported

* [] for AC

Grommet (G), (H): SYJ7□2-□^G□□-01□

With bracket:
SYJ7□2-□^G□□-01□-F

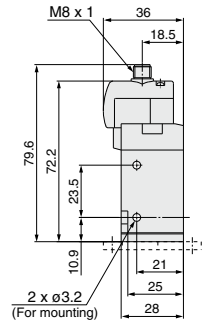
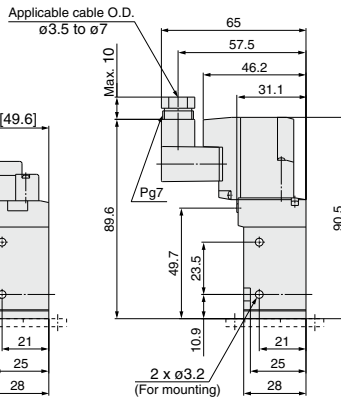
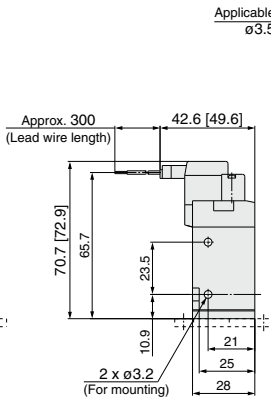
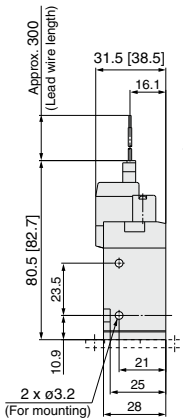


L plug connector (L):
SYJ7□2-□L□□-01□ (-F)

M plug connector (M):
SYJ7□2-□M□□-01□ (-F)

DIN terminal (D, Y):
SYJ7□2-□^D□□-01□ (-F)

M8 connector (WO):
SYJ7□2-□WO□□-01□ (-F)

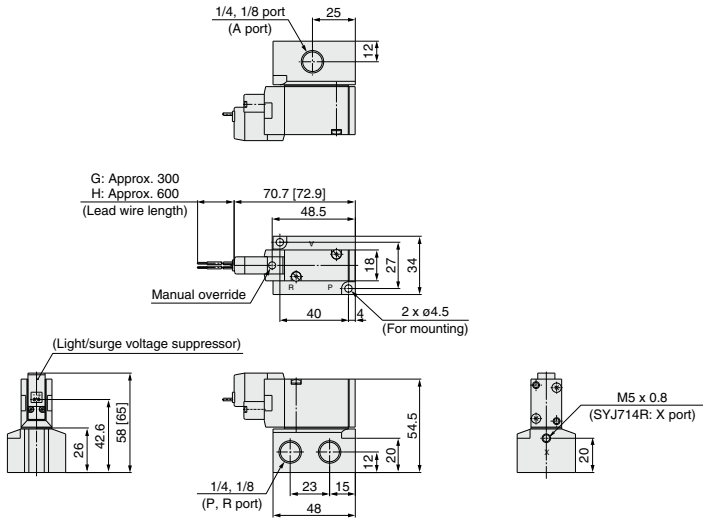


* Refer to page 1217 for dimensions with connector cable.

Base Mounted (With Sub-plate)

* [] for AC

Grommet (G), (H): SYJ7□4-□□^G□□□□⁰¹□□⁰²□

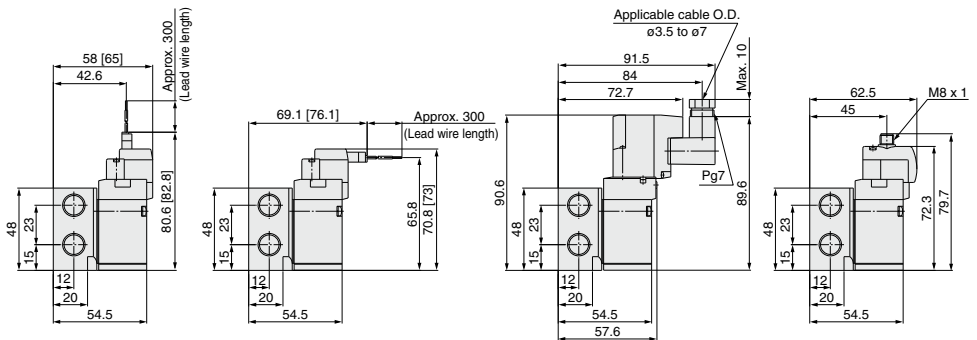


L plug connector (L):
SYJ7□4-□□L□□□⁰¹□□

M plug connector (M):
SYJ7□4-□□M□□□⁰¹□□

DIN terminal (D, Y):
SYJ7□4-□□Y□□□⁰¹□□

M8 connector (WO):
SYJ7□4-□□WO□□□⁰¹□□



* Refer to page 1217 for dimensions with connector cable.

SYJ

VQZ

VP

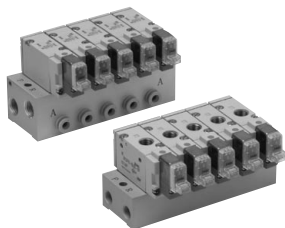
VG

VP3

SYJ700 Series Manifold Specifications



Manifold Specifications



Model	For internal pilot	Type 20	Type 21	Type 40	Type 41	Type 42
	For external pilot	—	Type 21R	—	Type 41R	Type 42R
Manifold type		Single base/B mount				
P (SUP), R (EXH)		Common SUP, common EXH				
Valve stations		2 to 20 stations				
A port Porting specifications	Location	Valve	Valve	Base	Base	Base
	Direction	Top	Top	Bottom	Bottom	Side
Port size	P, R port	1/8	1/4	1/8	1/4	1/4
	A port	1/8	1/8	1/8	1/8	1/8 C6 (ø6 One-touch fitting) C8 (ø8 One-touch fitting)
	X port <small>Note)</small>	—	M3 x 0.8	—	M5 x 0.8	M5 x 0.8

Note) Only for external pilot

Flow Rate Characteristics

Manifold			Port size		Flow rate characteristics					
					1→2 (P→A)			2→3 (A→R)		
			1(P), 3(R) port	2(A) port	C [dm ³ /(sbar)]	b	Cv	C [dm ³ /(sbar)]	b	Cv
Body ported for internal pilot	Type SS3YJ7-20	SYJ7□2	1/8	1/8	2.2	0.34	0.55	2.3	0.27	0.59
	Type SS3YJ7-21		1/4	1/8	2.2	0.39	0.59	2.4	0.32	0.62
	Type SS3YJ7-40		1/8	1/8	2.1	0.35	0.59	2.3	0.27	0.54
Base mounted for internal pilot	Type SS3YJ7-41	SYJ7□4	1/4	1/8	2.2	0.35	0.59	2.4	0.36	0.66
	Type SS3YJ7-42-01		1/4	1/8	2.0	0.27	0.47	2.2	0.32	0.56
	Type SS3YJ7-42-C6		1/4	C6	1.6	0.32	0.39	2.2	0.27	0.54
	Type SS3YJ7-42-C8		1/4	C8	2.1	0.24	0.51	2.3	0.31	0.59
Body ported for external pilot	Type SS3YJ7-21R	SYJ7□2R	1/4	1/8	2.2	0.34	0.55	2.4	0.32	0.62
	Type SS3YJ7-41R		1/4	1/8	2.2	0.35	0.59	2.4	0.36	0.66
Base mounted for external pilot	Type SS3YJ7-42R-01	SYJ7□4R	1/4	1/8	2.0	0.27	0.47	2.2	0.32	0.56
	Type SS3YJ7-42R-C6		1/4	C6	1.6	0.32	0.39	2.2	0.27	0.54
	Type SS3YJ7-42R-C8		1/4	C8	2.1	0.24	0.51	2.3	0.31	0.59

Note) Value at manifold base mounted, 2 position single operating

How to Order Manifold (Example)

Instruct by specifying the valves and blanking plate assembly to be mounted on the manifold along with the manifold base model no.

(Example)

SS3YJ7-20-03 1 set (manifold base) SS3YJ7-42R-03-01 1 set (manifold base)

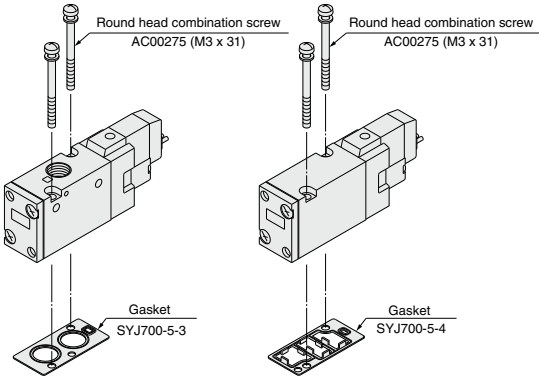
* SYJ712-5LZ-01 2 sets (valve) * SYJ714R-5G 2 sets (valve)

* SYJ700-10-1A 1 set (blanking plate assembly) * SYJ700-10-2A 1 set (blanking plate assembly)

↳ The asterisk denotes the symbol for assembly. Prefix it to the part nos. of the solenoid valve, etc.

Combinations of Solenoid Valve, Manifold Gasket and Manifold Base

Body ported (Type SYJ7□2(-Q)) Base mounted (Type SYJ7□4(-Q))



Applicable base
Type SS3YJ7-20(-Q)
Type SS3YJ7-21(-Q)
Type SS3YJ7-21R(-Q)

Manifold base

Applicable base Sub-plate
Type SS3YJ7-40(-Q)
Type SS3YJ7-41(-Q)
Type SS3YJ7-42(-Q)
Type SS3YJ7-41R(-Q)
Type SS3YJ7-42R(-Q)

Manifold base

Caution

Mounting screw tightening torques

M3: 0.8 N-m

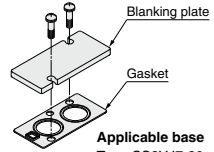
Use caution to the assembly orientation for solenoid valves, gasket and optional parts.

Blanking Plate Assembly

<Standard>

Part no.: SYJ700-10-1A

- For body ported
- For base mounted

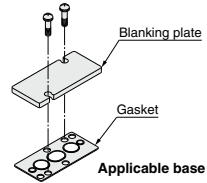


Applicable base
Type SS3YJ7-20
Type SS3YJ7-21
Type SS3YJ7-21R

Manifold base

Part no.: SYJ700-10-2A

- For base mounted



Applicable base
Type SS3YJ7-40
Type SS3YJ7-41
Type SS3YJ7-42
Type SS3YJ7-41R
Type SS3YJ7-42R

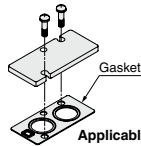
Manifold base

Note) It can be mounted on a body ported manifold base. However, when mounting a blanking part to a valve, place an order for a separate gasket (SYJ700-5-3) when placing an order for the valve.

When using the SYJ700-10-1A, a gasket for this blanking plate assembly can be used as a gasket for the valve as well.

<CE-compliant>

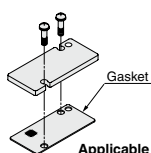
Part no.: SYJ700-10-2A-1-Q



Applicable base
Type SS3YJ7-20-Q
Type SS3YJ7-21-Q
Type SS3YJ7-21R-Q

Manifold base

Part no.: SYJ700-10-2A-2-Q



Applicable base
Type SS3YJ7-40-Q
Type SS3YJ7-41-Q
Type SS3YJ7-42-Q
Type SS3YJ7-41R-Q
Type SS3YJ7-42R-Q

Manifold base

SYJ

QZ

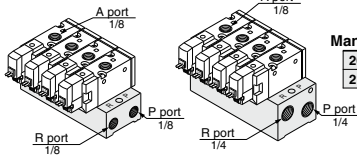
VP

VG

VP3

Manifold for Internal Pilot Type

Type 20/Type 21



How to Order

SS3YJ7 - 20 - 05 - [] - []

Manifold type	20 Type 20 21 Type 21
Stations	02 2 stations : 20 20 stations

P, R port thread type	Nll Rc 00F G 00N NPT 00T NPTF
-----------------------	--

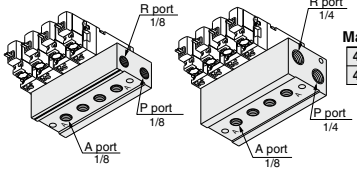
CE-compliant	Nll — Q CE-compliant
--------------	-------------------------

Applicable solenoid valve
SYJ712-□□□□-01(-Q)
SYJ712M-□□□□-01(-Q)
SYJ722-□□□□-01(-Q)
SYJ722M-□□□□-01(-Q)

Applicable blanking plate assembly
Refer to page 1199.

Note) If there are more than 6 stations for type 20, or more than 9 stations for type 21, supply air to both sides of P port and exhaust air from both sides of R port.

Type 40/Type 41



How to Order

SS3YJ7 - 40 - 05 - 01 - [] - []

Manifold type	40 Type 40 41 Type 41
Stations	02 2 stations : 20 20 stations

P, R port thread type	Nll Rc F G N NPT T NPTF
-----------------------	----------------------------------

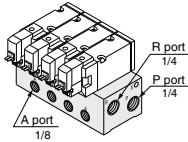
CE-compliant	Nll — Q CE-compliant
--------------	-------------------------

Applicable solenoid valve
SYJ714-□□□□(-Q)
SYJ714M-□□□□(-Q)
SYJ724-□□□□(-Q)
SYJ724M-□□□□(-Q)

Applicable blanking plate assembly
Refer to page 1199.

Note) If there are more than 6 stations for type 40, or more than 9 stations for 41 type, supply air to both sides of P port and exhaust air from both sides of R port.

Type 42



How to Order

SS3YJ7 - 42 - 05 - C6 - [] - []

Stations	02 2 stations : 20 20 stations
A port size	01 1/8 C6 ø6 One-touch fitting C8 ø8 One-touch fitting N7 ø1/4" One-touch fitting N9 ø5/16" One-touch fitting

P, R port thread type	Nll Rc F G N NPT T NPTF
-----------------------	----------------------------------

CE-compliant	Nll — Q CE-compliant
--------------	-------------------------

Applicable solenoid valve
SYJ714-□□□□(-Q)
SYJ714M-□□□□(-Q)
SYJ724-□□□□(-Q)
SYJ724M-□□□□(-Q)

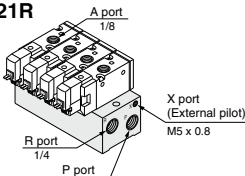
Applicable blanking plate assembly
Refer to page 1199.

Note) For more than 9 stations, supply air to both sides of P port and exhaust air from both sides of R port.

Manifold for External Pilot Type

Pilot valve pressure is supplied separately from the main valve pressure through the use of a separate supply port. It can be used in the vacuum (up to -100 kPa) or low pressure line with 0.15 MPa or less.

Type 21R



How to Order

SS3YJ7 - 21R - 05 - [] - []

Stations	02 2 stations : 20 20 stations
----------	--------------------------------------

P, R port thread type	Nll Rc 00F G 00N NPT 00T NPTF
-----------------------	--

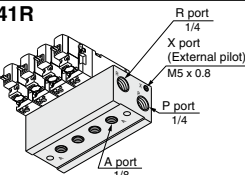
CE-compliant	Nll — Q CE-compliant
--------------	-------------------------

Applicable solenoid valve
SYJ712R-□□□□-01(-Q)
SYJ722R-□□□□-01(-Q)

Applicable blanking plate assembly
Refer to page 1199.

Note) For more than 9 stations, supply/exhaust air to/from both sides of P and R port.

Type 41R



How to Order

SS3YJ7 - 41R - 05 - 01 - [] - []

Stations	02 2 stations : 20 20 stations
----------	--------------------------------------

P, R port thread type	Nll Rc F G N NPT T NPTF
-----------------------	----------------------------------

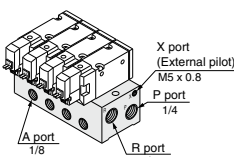
CE-compliant	Nll — Q CE-compliant
--------------	-------------------------

Applicable solenoid valve
SYJ714R-□□□□(-Q)
SYJ724R-□□□□(-Q)

Applicable blanking plate assembly
Refer to page 1199.

Note) For more than 9 stations, supply/exhaust air to/from both sides of P and R port.

Type 42R



How to Order

SS3YJ7 - 42R - 05 - 01 - [] - []

Stations	02 2 stations : 20 20 stations
----------	--------------------------------------

A port size	01 1/8 C6 ø6 One-touch fitting C8 ø8 One-touch fitting N7 ø1/4" One-touch fitting N9 ø5/16" One-touch fitting
-------------	---

P, R port thread type	Nll Rc F G N NPT T NPTF
-----------------------	----------------------------------

Applicable solenoid valve
SYJ714R-□□□□(-Q)
SYJ724R-□□□□(-Q)

Applicable blanking plate assembly
Refer to page 1199.

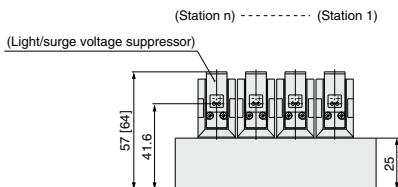
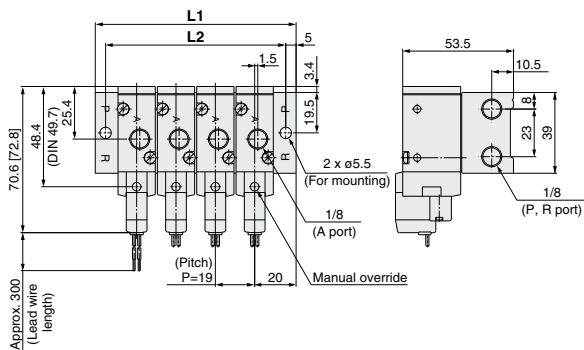
CE-compliant	Nll — Q CE-compliant
--------------	-------------------------

Note) For more than 9 stations, supply/exhaust air to/from both sides of P and R port.

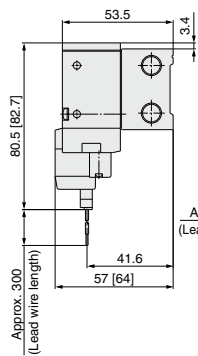
Type 20 Manifold: Top Ported/SS3YJ7-20-**Stations** (-00□)

* [] for AC

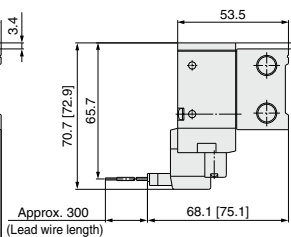
Grommet (G)



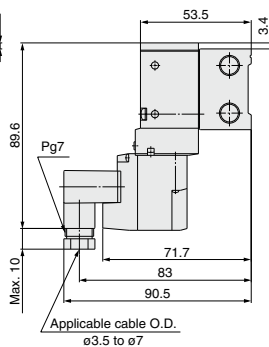
L plug connector (L)



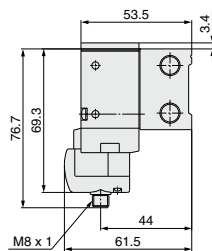
M plug connector (M)



DIN terminal (D, Y)



M8 connector (WO)



* Refer to page 1217 for dimensions with connector cable.

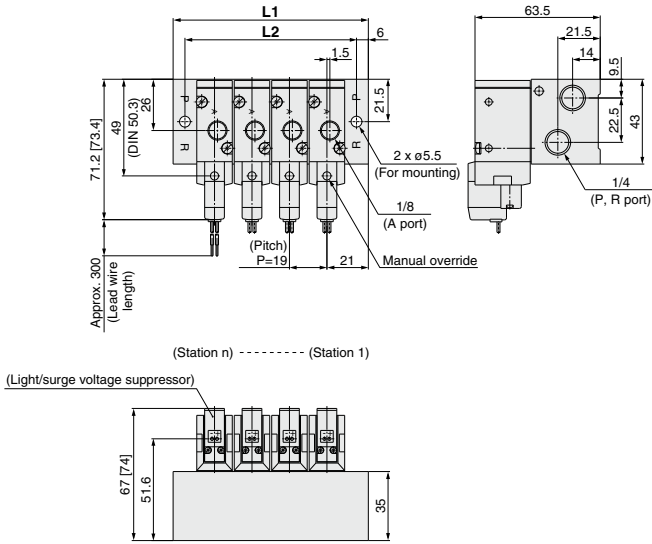
Station n	Station 2	3	4	5	6	7	8	9	10	11	12	13	14	15	16	17	18	19	Station 20
L1	59	78	97	116	135	154	173	192	211	230	249	268	287	306	325	344	363	382	401
L2	49	68	87	106	125	144	163	182	201	220	239	258	277	296	315	334	353	372	391

SYJ700 Series

Type 21 Manifold: Top Ported/SS3YJ7-21-Stations (-00□)

* [] for AC

Grommet (G)

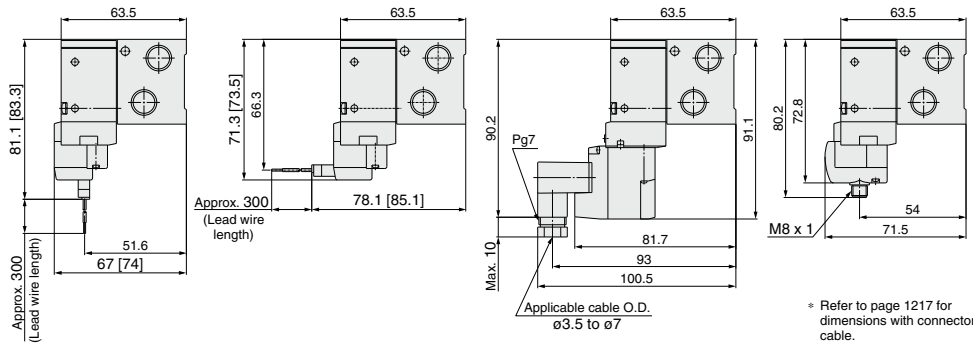


L plug connector (L)

M plug connector (M)

DIN terminal (D, Y)

M8 connector (WO)



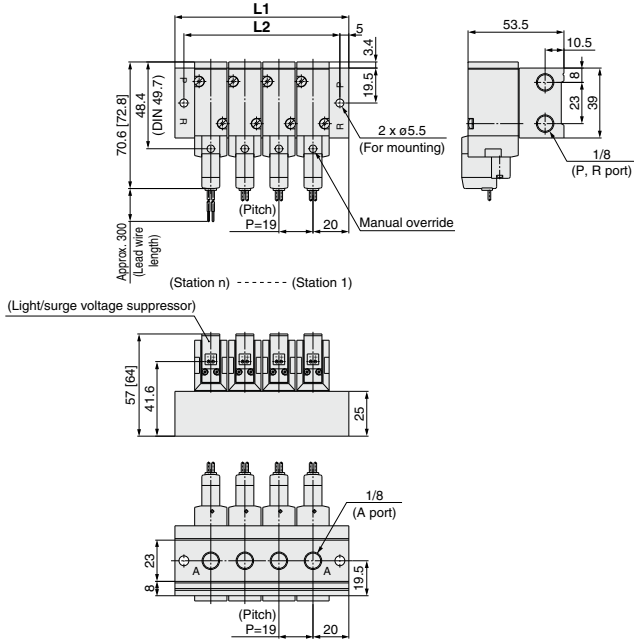
* Refer to page 1217 for dimensions with connector cable.

Station n	Station 2	3	4	5	6	7	8	9	10	11	12	13	14	15	16	17	18	19	Station 20
L1	61	80	99	118	137	156	175	194	213	232	251	270	289	308	327	346	365	384	403
L2	49	68	87	106	125	144	163	182	201	220	239	258	277	296	315	334	353	372	391

Type 40 Manifold: Bottom Ported/SS3YJ7-40-Stations-01□

* [] for AC

Grommet (G)

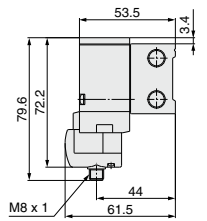
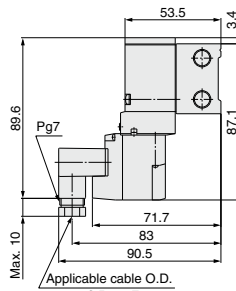
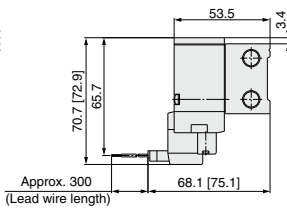
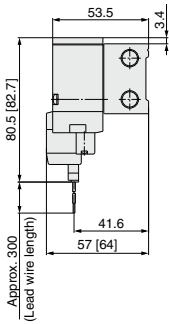


L plug connector (L)

M plug connector (M)

DIN terminal (D, Y)

M8 connector (WO)



* Refer to page 1217 for dimensions with connector cable.

Station n	Station 2	3	4	5	6	7	8	9	10	11	12	13	14	15	16	17	18	19	Station 20
L1	59	78	97	116	135	154	173	192	211	230	249	268	287	306	325	344	363	382	401
L2	49	68	87	106	125	144	163	182	201	220	239	258	277	296	315	334	353	372	391

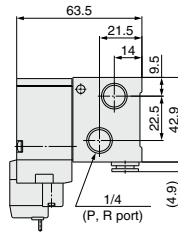
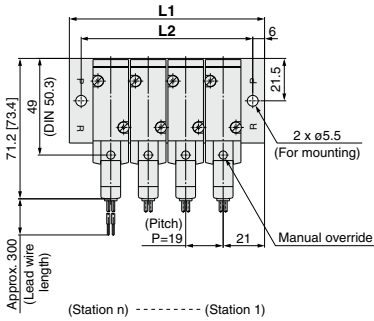
SYJ700 Series

Type 42 Manifold: Side Ported/SS3YJ7-42-**Stations**-01, C6 N7
 C8 N9

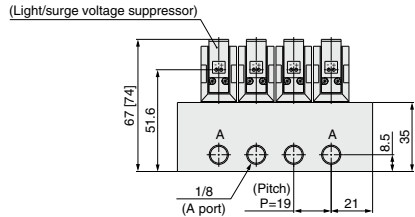
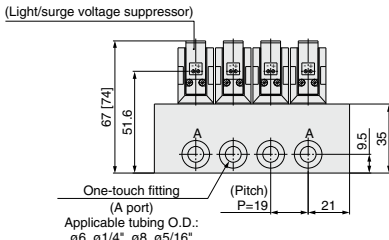
* [] for AC

Grommet (G)

For C6 N7 C8 N9 (Built-in One-touch fitting)



For 1/8

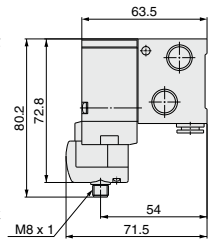
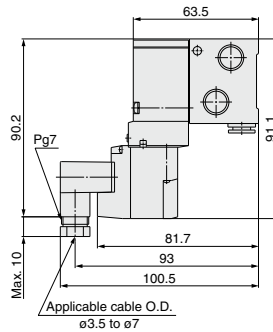
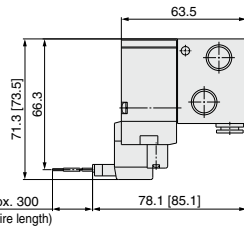
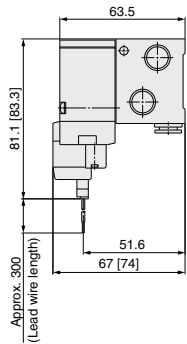


L plug connector (L)

M plug connector (M)

DIN terminal (D, Y)

M8 connector (WO)



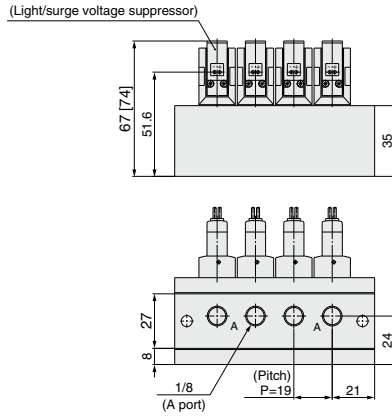
* Refer to page 1217 for dimensions with connector cable.

Station n	Station 2	3	4	5	6	7	8	9	10	11	12	13	14	15	16	17	18	19	Station 20
L1	61	80	99	118	137	156	175	194	213	232	251	270	289	308	327	346	365	384	403
L2	49	68	87	106	125	144	163	182	201	220	239	258	277	296	315	334	353	372	391

Type 41 Manifold: Bottom Ported/SS3YJ7-41- Stations -01 □

* [] for AC

Grommet (G)



* Other dimensions are the same as type 42.
For dimensions, refer to page 1204.

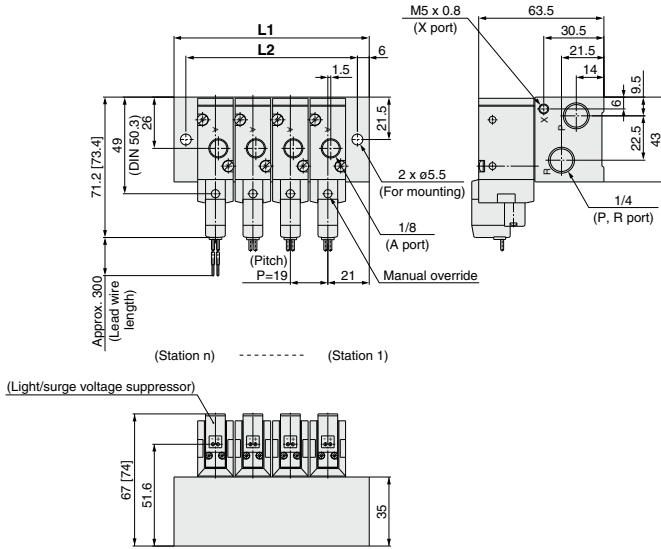
SYJ
VQZ
VP
VG
VP3

SYJ700 Series

Type 21R Manifold: Top Ported (External Pilot Type)/SS3YJ7-21R-Stations (-00□)

* [] for AC

Grommet (G)

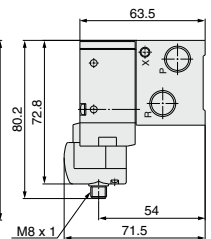
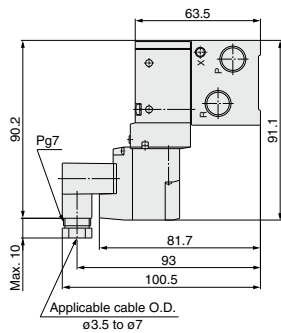
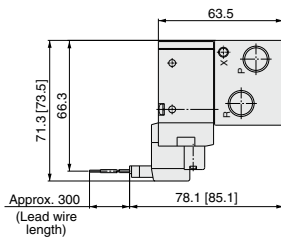
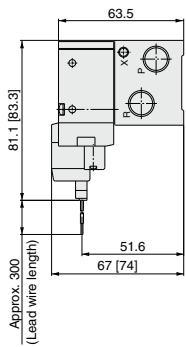


L plug connector (L)

M plug connector (M)

DIN terminal (D)

M8 connector (WO)



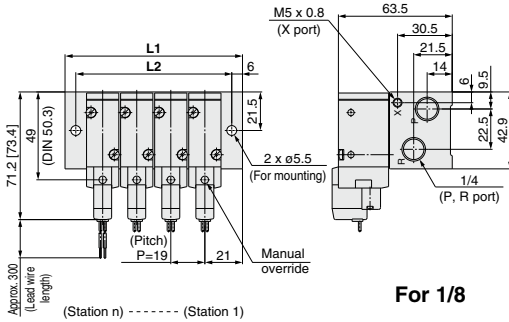
* Refer to page 1217 for dimensions with connector cable.

Station n	Station 2	3	4	5	6	7	8	9	10	11	12	13	14	15	16	17	18	19	Station 20
L1	61	80	99	118	137	156	175	194	213	232	251	270	289	308	327	346	365	384	403
L2	49	68	87	106	125	144	163	182	201	220	239	258	277	296	315	334	353	372	391

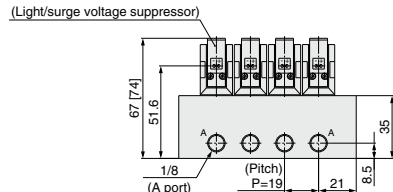
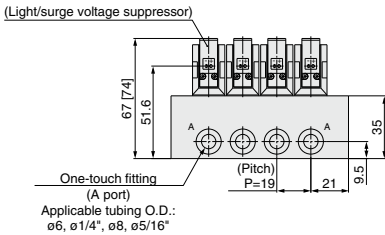
Type 42R Manifold: Side Ported/SS3YJ7-42R-**Stations**-01, C6 N7
C8, N9

* [] for AC

Grommet (G)



For 1/8

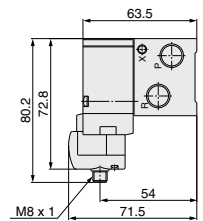
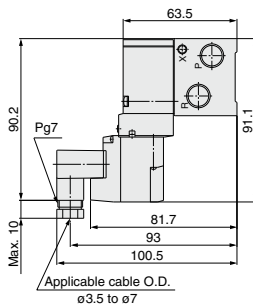
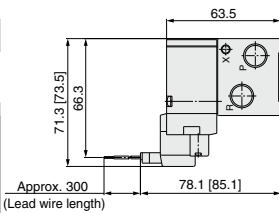
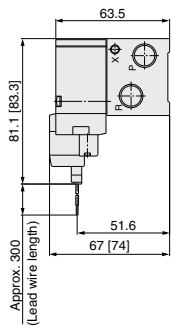


L plug connector (L)

M plug connector (M)

DIN terminal (D)

M8 connector (WO)



* Refer to page 1217 for dimensions with connector cable.

Station n	Station 2	3	4	5	6	7	8	9	10	11	12	13	14	15	16	17	18	19	Station 20
L1	61	80	99	118	137	156	175	194	213	232	251	270	289	308	327	346	365	384	403
L2	49	68	87	106	125	144	163	182	201	220	239	258	277	296	315	334	353	372	391

SYJ

VQZ

VP

VG

VP3

M8 Connector Conforming to IEC60947-5-2

SYJ300/500/700 Series

Made to Order



How to Order Valve

Type of actuation

1	Normally closed
2	Normally open

Series

3	SYJ300
5	SYJ500
7	SYJ700

Rated voltage

DC	5	24 VDC
6	12 VDC	
V	6 VDC	
S	5 VDC	
R	3 VDC	

Light/Surge voltage suppressor

Nil	Without light/surge voltage suppressor
S	With surge voltage suppressor
Z	With light/surge voltage suppressor
R	With surge voltage suppressor (Non-polar type)
U	With light/surge voltage suppressor (Non-polar type)

Bracket

Nil	Without bracket
F	With bracket

Port size

M5	M5 x 0.8
01	1/8 (SYJ700 only)

Made to Order
(page 1211)
Body ported external pilot
* X20 for the SYJ300 series is not available.

Body option

Nil	Pilot valve individual exhaust
M	Common exhaust type for main and pilot valve
R	External pilot*

Electrical entry

WAO: Without connector

WA□: With connector ^{Note}

CE-compliant

Nil	—
Q	CE-compliant

Thread type

Nil	Rc
F	G
N	NPT
T	NPTF

Port size

Nil	Without sub-plate	
M5	M5 port	SYJ300
	With sub-plate	
01	1/8 port	SYJ500
	With sub-plate	SYJ700
02	1/4 port	SYJ700
	With sub-plate	

Manual override

Nil	Non-locking push type
D	Push-turn locking slotted type
E	Push-turn locking lever type

Body ported SYJ 5 1 2 □ - 5 WAO □ □ - M5 - □ - □

Base mounted SYJ 5 1 4 □ - 5 WAO □ □ - 01 - □ - □

3 port (Manifold types 20, 20R, 21R)

3 port (Sub-plate type, manifold types 40, 40R, 41, 41R, S41, 42, S42, 42R, S42R)

* SYJ□2R, SYJ5□2R, SYJ7□2R are only for manifold use.

Note) Enter the cable length symbols in □. Please be sure to fill in the blank referring to page 1217.

How to Order Pilot Valve Assembly

V111 - 5 WAO □

Rated voltage

DC	5	24 VDC
6	12 VDC	
V	6 VDC	
S	5 VDC	
R	3 VDC	

Light/Surge voltage suppressor

Nil	Without light/surge voltage suppressor
S	With surge voltage suppressor
Z	With light/surge voltage suppressor
R	With surge voltage suppressor (Non-polar type)
U	With light/surge voltage suppressor (Non-polar type)

Electrical entry

WAO	M8 connector	Without connector
WA□		With connector ^{Note}

Note) Enter the cable length symbols in □. Please be sure to fill in the blank referring to page 1217.

Note) Since V111 is CE-compliant as standard, the suffix "Q" is not necessary.

SYJ500/700 Series

Made to Order

For detailed specifications, delivery and pricing, please contact SMC.



Note) AC-type models that are CE-compliant have DIN terminals only.

Body Ported External Pilot

How to Order Applicable solenoid valve series/SYJ5□2R, SYJ7□2R



• CE-compliant

NII	—
Q	CE-compliant

Note) AC-type models that are CE-compliant have DIN terminals only.

Operating Pressure Range MPa

Operating pressure range	-100 kPa to 0.7
Pilot pressure range	0.15 to 0.7

Dimensions

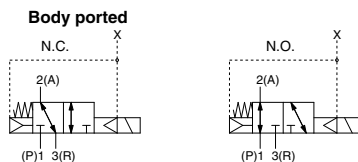
SYJ500: 8 mm longer in total length

SYJ700: 8 mm longer in total length

External Pilot Port

Series	Port size
SYJ500, SYJ700	M5 x 0.8

Symbol



SYJ

VQZ

VP

VG

VP3



SYJ300/500/700 Series

Specific Product Precautions 1

Be sure to read this before handling the products.

Refer to back page 50 for Safety Instructions and pages 3 to 9 for 3/4/5 Port Solenoid Valve Precautions.

Manual Override Operation

Warning

When the manual override is operated, connected equipment will be actuated. Confirm safety before operating.

■ Non-locking push type [Standard]

Press in the direction of the arrow



■ Push-turn slotted locking type [Type D]

While pressing, turn in the direction of the arrow.

If it is not turned, it can be operated the same way as the non-locking type.



Locked position



Caution

When operating the locking type D with a screw driver, turn it gently using a watchmakers screw driver. [Torque: Less than 0.1 N·m]

■ Push-turn locking lever type [Type E]

While pressing, turn in the direction of the arrow.

If it is not turned, it can be operated the same way as the non-locking type.



Locked position



Caution

When locking the manual override on the push-turn locking types (D, E), be sure to push it down before turning. Turning without first pushing it down can cause damage to the manual override and trouble such as air leakage, etc.

Solenoid Valve for 200, 220 VAC Specifications

Warning

Solenoid valves with grommet and L/M type plug connector AC specifications have a built-in rectifier circuit in the pilot section to operate the DC coil.

With 200, 220 VAC specification pilot valves, this built-in rectifier generates heat when energized. The surface may become hot depending on the energized condition; therefore, do not touch the solenoid valves.

Common Exhaust Type for Main and Pilot Valve

Caution

Pilot air is exhausted through the main valve body rather than directly to atmosphere.

- Suitable for applications where exhausting the pilot valve to atmosphere would be detrimental to the surrounding working environment.
- For use in extremely dirty environments where there is the possibility that dust could enter the pilot exhaust and damage the valve.

Ensure that the piping of exhaust air is not too restrictive.

Bracket

Caution

For bracket attached types of SYJ300, do not use it without bracket.



SYJ300/500/700 Series

Specific Product Precautions 2

Be sure to read this before handling the products.

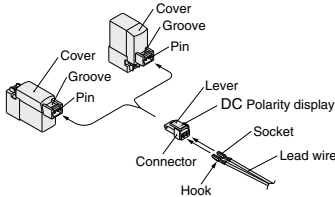
Refer to back page 50 for Safety Instructions and pages 3 to 9 for 3/4/5 Port Solenoid Valve Precautions.

How to Use Plug Connector

⚠ Caution

1. Attaching and detaching connectors

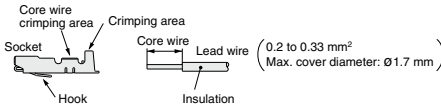
- To attach a connector, hold the lever and connector unit between your fingers and insert straight onto the pins of the solenoid valve so that the lever's pawl is pushed into the groove and locks.
- To detach a connector, remove the pawl from the groove by pushing the lever downward with your thumb, and pull the connector straight out.



2. Crimping of lead wires and sockets

Strip 3.2 to 3.7 mm at the end of the lead wires, insert the ends of the core wires evenly into the sockets, and then crimp with a crimping tool. When this is done, take care that the coverings of the lead wires do not enter the core wire crimping area.

Use an exclusive crimping tool for crimping. (Contact SMC for special crimping tools.)



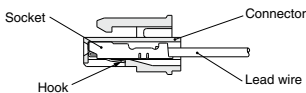
3. Attaching and detaching sockets with lead wires

• Attaching

Insert the sockets into the square holes of the connector (+, - indication), and continue to push the sockets all the way in until they lock by hooking into the seats in the connector. (When they are pushed in, their hooks open and they are locked automatically.) Then confirm that they are locked by pulling lightly on the lead wires.

• Detaching

To detach a socket from a connector, pull out the lead wire while pressing the socket's hook with a stick having a thin tip (approx. 1 mm). If the socket will be used again, first spread the hook outward.



Plug Connector Lead Wire Length

⚠ Caution

Standard length is 300 mm, but the following lengths are also available.

How to Order Connector Assembly

For DC: **SY100-30-4A**

For 100 VAC: **SY100-30-1A**

For 200 VAC: **SY100-30-2A**

For other voltages of AC: **SY100-30-3A**

Without lead wire: **SY100-30-A**
(with connector and 2 of sockets only)

• Lead wire length

Nil	300 mm
6	600 mm
10	1000 mm
15	1500 mm
20	2000 mm
25	2500 mm
30	3000 mm
50	5000 mm

How to Order

Include the connector assembly part number together with the part number for the plug connector's solenoid valve without connector.

EX.) In case of 2000 mm of lead wire

For DC	For AC
SYJ312-5LO-M3	SYJ312-1LO-M3
SY100-30-4A-20	SY100-30-1A-20

SYJ

VQZ

VP

VG

VP3



SYJ300/500/700 Series Specific Product Precautions 4

Be sure to read this before handling the products.
Refer to back page 50 for Safety Instructions and pages 3 to 9 for 3/4/5 Port Solenoid Valve Precautions.

Surge Voltage Suppressor

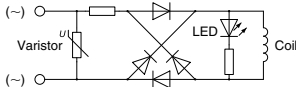
<For AC>

(There is no "S" type because the generation of surge voltage is prevented by a rectifier.)

⚠ Caution

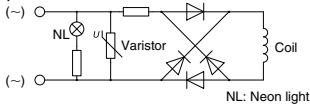
Grommet, L/M Plug Connector

With light (□Z)



DIN Terminal

With light (DZ)



NL: Neon light

Note) Surge voltage suppressor of varistor has residual voltage corresponding to the protective element and rated voltage; therefore, protect the controller side from the surge. The residual voltage of the diode is approximately 1 V.

How to Use DIN Terminal

⚠ Caution

Connection

- Loosen the holding screw and pull the connector out of the solenoid valve terminal block.
- After removing the holding screw, insert a flat head screwdriver, etc. into the notch on the bottom of the terminal block and pry it open, separating the terminal block and the housing.
- Loosen the terminal screws (slotted screws) on the terminal block, insert the cores of the lead wires into the terminals according to the connection method, and fasten them securely with the terminal screws.
- Secure the cord by fastening the gland nut.

⚠ Caution

When making connections, take note that using other than the supported size (ø3.5 to ø7) heavy duty cord will not satisfy IP65 (enclosure) standards. Also, be sure to tighten the gland nut and holding screw within their specified torque ranges.

Changing the entry direction

After separating the terminal block and housing, the cord entry can be changed by attaching the housing in the desired direction (4 directions at 90° intervals).

* When equipped with a light, be careful not to damage the light with the cord's lead wires.

Precautions

Plug in and pull out the connector vertically without tilting to one side.

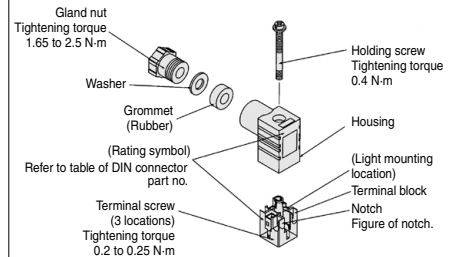
How to Use DIN Terminal

⚠ Caution

Compatible cable

Cord O.D.: ø3.5 to ø7

(Reference) 0.5mm², 2-core or 3-core, equivalent to JIS C 3306



Type "Y"

DIN connector type Y is a DIN connector that conforms to the DIN pitch 8-mm standard.

- D type DIN connector with 9.4 mm pitch between terminals is not interchangeable.
- To distinguish from the D type DIN connector, "N" is listed at the end of voltage symbol. (For connector parts without lights, "N" is not indicated. Please refer to the name plate to distinguish.)
- Dimensions are completely the same as D type DIN connector.
- When exchanging the pilot valve assembly only, "V115-□□" is interchangeable with "V115-□Y". Do not replace V111 (G, L, M) to V115-□□/□Y (DIN terminal), and vice versa.

Solenoid Valve Mounting

⚠ Caution

Mount it so that there is no slippage or deformation in gaskets, and tighten with the tightening torque as shown below.

Model	Thread size	Tightening torque
SYJ300	M1.7	0.12 N-m
SYJ500	M2.5	0.45 N-m
SYJ700	M3	0.8 N-m

SYJ

VQZ

VP

VG

VP3



SYJ300/500/700 Series Specific Product Precautions 5

Be sure to read this before handling the products.
Refer to back page 50 for Safety Instructions and pages 3 to 9 for 3/4/5 Port Solenoid Valve Precautions.

DIN Connector Part No.

⚠ Caution

<Type D>

Without light	SY100-61-1
---------------	------------

With light

Rated voltage	Voltage symbol	Part no.
24 VDC	24 V	SY100-61-3-05
12 VDC	12 V	SY100-61-3-06
100 VAC	100 V	SY100-61-2-01
200 VAC	200 V	SY100-61-2-02
110 VAC	110 V	SY100-61-2-03
220 VAC	220 V	SY100-61-2-04

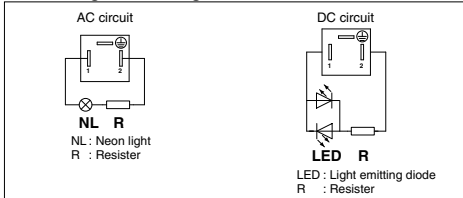
<Type Y>

Without light	SY100-82-1
---------------	------------

With light

Rated voltage	Voltage symbol	Part no.
DC24 V	24 VN	SY100-82-3-05
DC12 V	12 VN	SY100-82-3-06
100 VAC	100 VN	SY100-82-2-01
200 VAC	200 VN	SY100-82-2-02
110 VAC(115 VAC)	110 VN	SY100-82-2-03
220 VAC(230 VAC)	220 VN	SY100-82-2-04

Circuit Diagram with Light



Connector Assembly with Cover

⚠ Caution

Connector assembly with dust proof protective cover.

- Effective to prevention of short circuit failure due to the entry of foreign matter into the connector.
- Chloroprene rubber for electrical use, which provides outstanding weather resistance and electrical insulation, is used for the cover material. However, do not allow contact with cutting oil oil, etc.
- Simple and unencumbered appearance by adopting round-shaped cord.

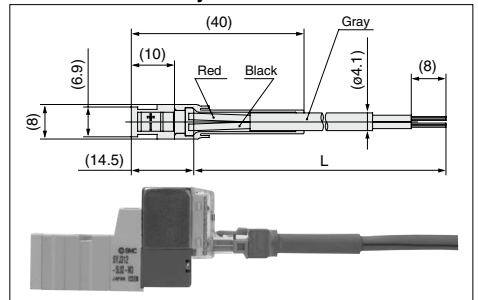
How to Order

SY100-68-A-

Lead wire length

Nil	300 mm
6	600 mm
10	1000 mm
15	1500 mm
20	2000 mm
25	2500 mm
30	3000 mm
50	5000 mm

Connector Assembly with Cover: Dimensions



How to Order

Enter the part number for a plug connector solenoid valve without connector together with the part number for a connector assembly with cover.

- Ex. 1) Lead wire length of 2000 mm
SYJ312-5LOZ-M3
SY100-68-A-20
- Ex. 2) Lead wire length of 300 mm (standard)
SYJ312-5LPZ-M3

Symbol for connector assembly with cover

* In this case, the part number for the connector assembly with cover is not required.



SYJ300/500/700 Series Specific Product Precautions 6

Be sure to read this before handling the products.
Refer to back page 50 for Safety Instructions and pages 3 to 9 for 3/4/5 Port Solenoid Valve Precautions.

M8 Connector

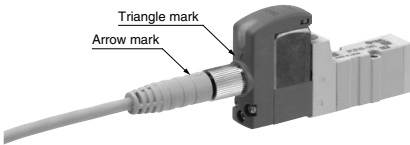
⚠ Caution

- M8 connector types have an IP65 (enclosure) rating, offering protection from dust and water. However please note: these products are not intended for use in water. Select a SMC connector cable (V100-49-1-□) or a FA sensor type connector, with M8 threaded 3 pin specifications conforming to Nippon Electric Control Equipment Association Standard, NECA4202 (IEC60947-5-2). Make sure the connector O.D. is 10.5 mm or less when used with the SYJ300 series manifold. If more than 10.5 mm, it cannot be mounted due to the size.
- Do not use a tool to mount the connector, as this may cause damage. Only tighten by hand. (0.4 to 0.6 N·m)
- The excessive stress on the cable connector will not be able to satisfy the IP65 rating. Please use caution and do not apply a stress of 30 N or greater.

⚠ Caution

Failure to meet IP65 performance may result if using alternative connectors than those shown above, or when insufficiently tightened.

• Connector cable mounting



Note) Connector cable should be mounted in the correct direction. Make sure that the arrow symbol on the connector is facing the triangle symbol on the valve when using SMC connector cable (V100-49-1-□). Be careful not to squeeze it in the wrong direction, as problems such as pin damage may occur.

■ Connector cable

- Connector cable for M8 can be ordered as follows:

How to Order

- To order solenoid valve and connector cable at the same time.

(Connector cable will be included in the shipment of the solenoid valve.)

SYJ $\frac{3}{5}$ □ □ □ - □ □ □ □ - □ □

Electrical entry

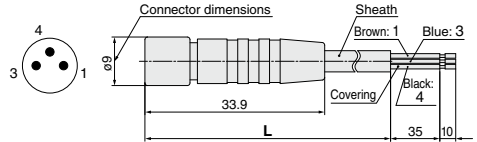
- W1, WA1: Cable length 300 mm
- W2, WA2: Cable length 500 mm
- W3, WA3: Cable length 1000 mm
- W4, WA4: Cable length 2000 mm
- W7, WA7: Cable length 5000 mm

- Ex. 1) Cable length: 300 mm

SYJ312-5W1ZE-M3

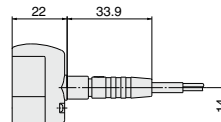
↳ Symbol for electrical entry

- To order connector cable only



Cable length (L)	Part no.
300 mm	V100-49-1-1
500 mm	V100-49-1-2
1000 mm	V100-49-1-3
2000 mm	V100-49-1-4
5000 mm	V100-49-1-7

Sheath O.D.	ø3.4 mm
Cover diameter	ø1.16 mm
Conductor area	0.16 mm ²



SYJ

VQZ

VP

VG

VP3



SYJ300/500/700 Series Specific Product Precautions 7

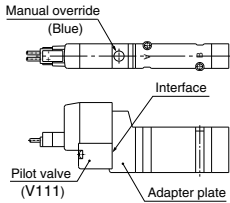
Be sure to read this before handling the products.
Refer to back page 50 for Safety Instructions and pages 3 to 9 for 3/4/5 Port Solenoid Valve Precautions.

Replacement of Pilot Valve

Caution

Pilot valves in this series are improved to provide excellent energy saving results. However following this improvement, these new valves are no longer compatible with the current pilot valve used at the interface. Consult with SMC when you need to exchange these pilot valves, in the case of manual override (marked in orange) of the adapter plate.

New type



Current type

