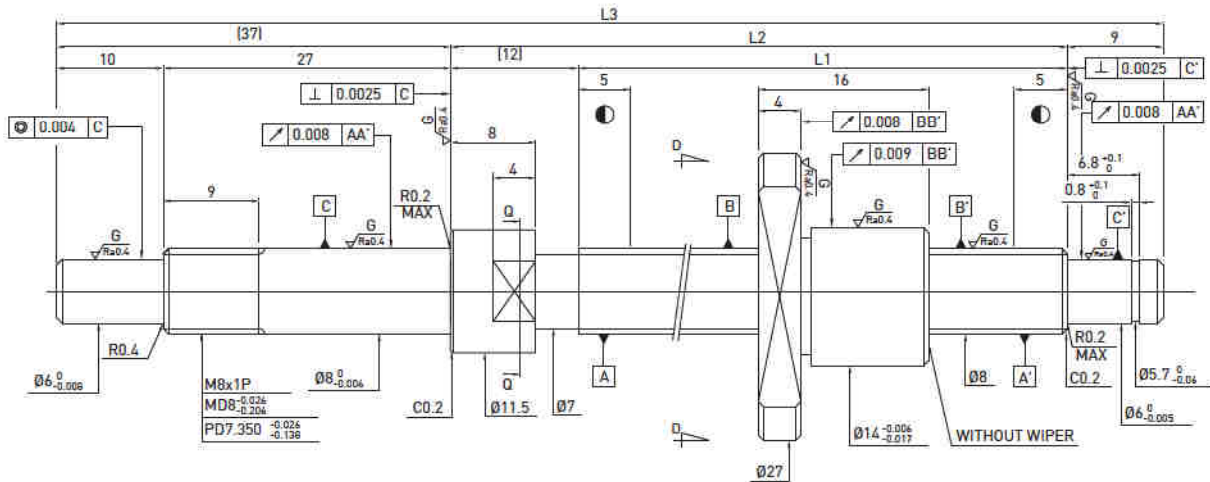
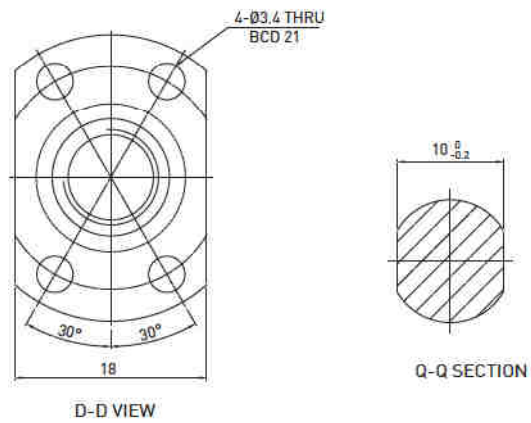


FSI Type (SHAFT OD 8, LEAD 1) ◀ Miniature



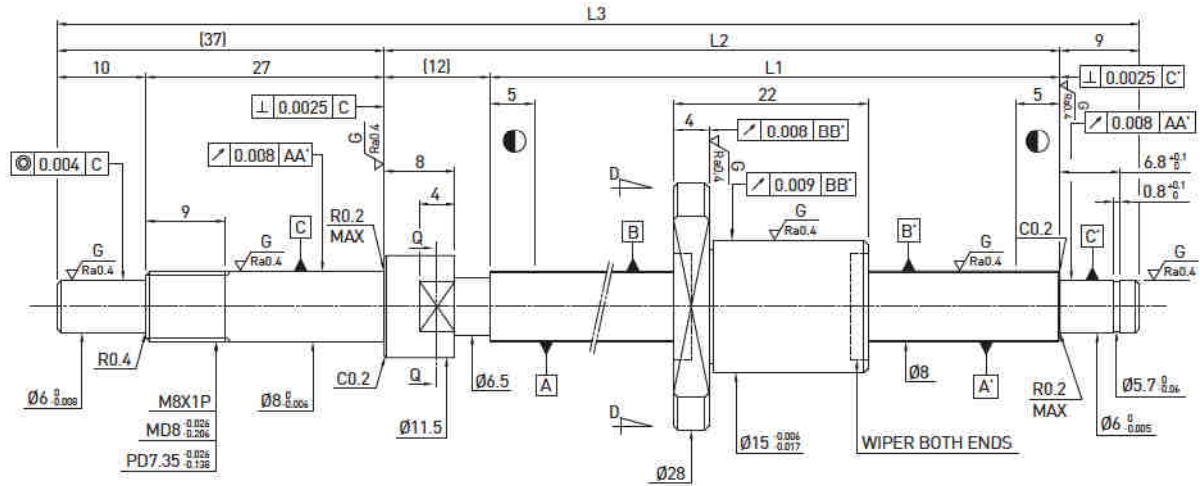
Ball screw Data	
Direction	Right Hand
Lead (mm)	1.0
Lead Angle	2.25°
P.C.D (mm)	8.1
Screw P.C.D (mm)	8.1
RD (mm)	7.261
Steel Ball (mm)	ϕ0.8
Circuits	1x3
Dynamic Load C (kgf)	79
Static Load Co (kgf)	157
Axial Play (mm)	0 0.005 MAX
Drag Torque (kgf-cm)	0.18 MAX 0.05 MAX
Spacer Ball	- -



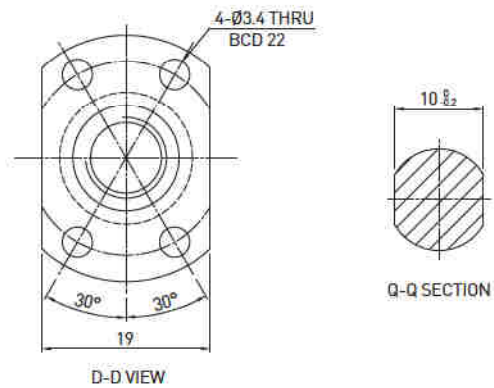
Unit : mm

Stroke	HIWIN Code	L1	L2	L3	Accuracy grade
40	R8-1.0T3-FSI-80-138-0.008	80	92	138	C3
70	R8-1.0T3-FSI-110-168-0.008	110	122	168	C3
100	R8-1.0T3-FSI-140-198-0.008	140	152	198	C3
150	R8-1.0T3-FSI-190-248-0.008	190	202	248	C3

FSI Type (SHAFT OD 8, LEAD 1.5) ◀ Miniature



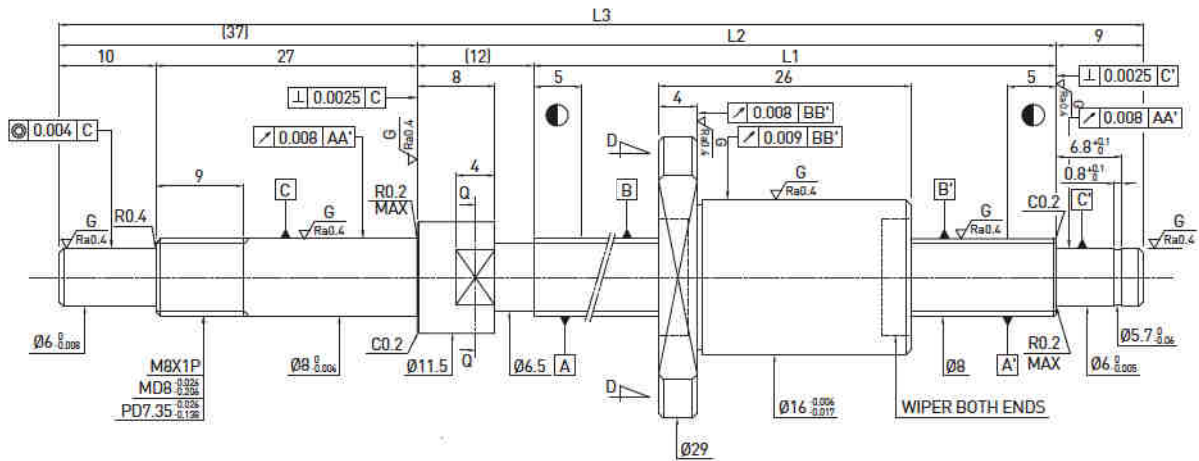
Ball screw Data	
Direction	Right Hand
Lead (mm)	1.5
Lead Angle	3.37°
P.C.D (mm)	8.1
Screw P.C.D (mm)	8.1
RD (mm)	7.050
Steel Ball (mm)	Ø1
Circuits	1x3
Dynamic Load C (kgf)	105
Static Load Co (kgf)	191
Axial Play (mm)	0 0.005 MAX
Drag Torque (kgf-cm)	0.2 MAX 0.05 MAX
Spacer Ball	- -



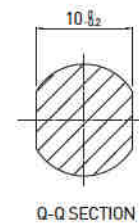
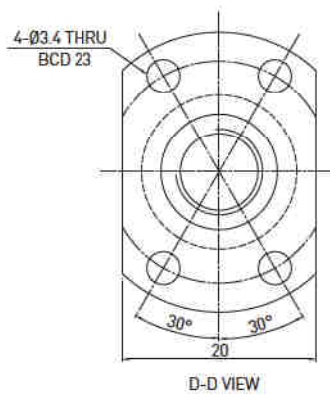
Unit : mm

Stroke	HIWIN Code	L1	L2	L3	Accuracy grade
40	R8-1.5T3-FSI-80-138-0.008	80	92	138	C3
70	R8-1.5T3-FSI-110-168-0.008	110	122	168	C3
100	R8-1.5T3-FSI-140-198-0.008	140	152	198	C3
150	R8-1.5T3-FSI-190-248-0.008	190	202	248	C3

FSI Type (SHAFT OD 8, LEAD 2) ◀ Miniature



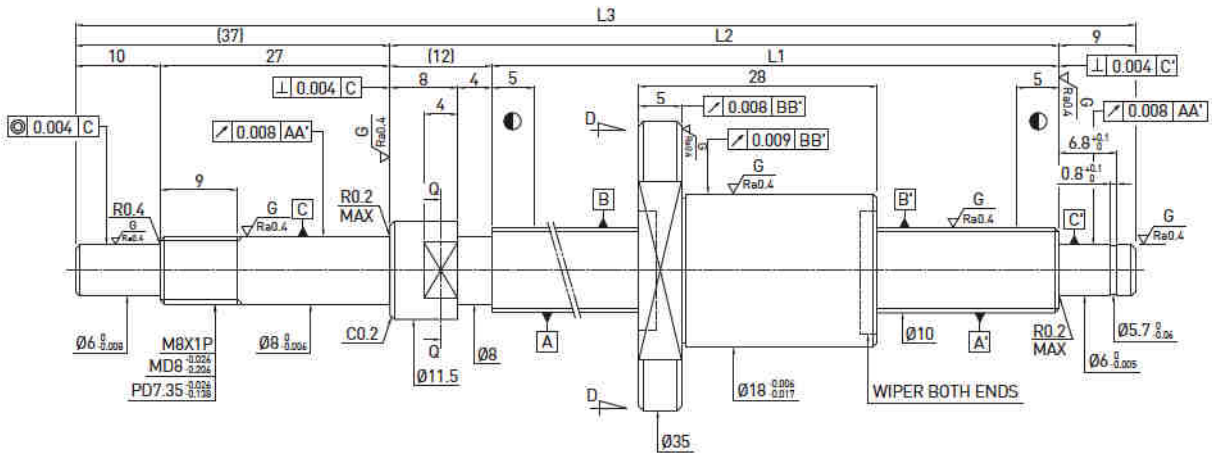
Ball screw Data		
Direction	Right Hand	
Lead (mm)	2	
Lead Angle	4.44°	
P.C.D (mm)	8.2	
Screw P.C.D (mm)	8.2	
RD (mm)	6.652	
Steel Ball (mm)	Ø1.5	
Circuits	1x3	
Dynamic Load C (kgf)	170	
Static Load Co (kgf)	267	
Axial Play (mm)	0	0.005 MAX
Drag Torque (kgf-cm)	0.20 MAX	0.03 MAX
Spacer Ball	-	-



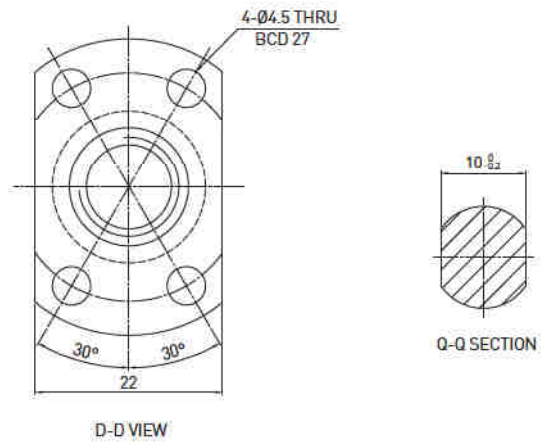
Unit : mm

Stroke	HIWIN Code	L1	L2	L3	Accuracy grade
40	R8-2T3-FSI-80-138-0.008	80	92	138	C3
70	R8-2T3-FSI-110-168-0.008	110	122	168	C3
100	R8-2T3-FSI-140-198-0.008	140	152	198	C3
150	R8-2T3-FSI-190-248-0.008	190	202	248	C3

FSI Type (SHAFT OD 10, LEAD 2) ◀ Miniature



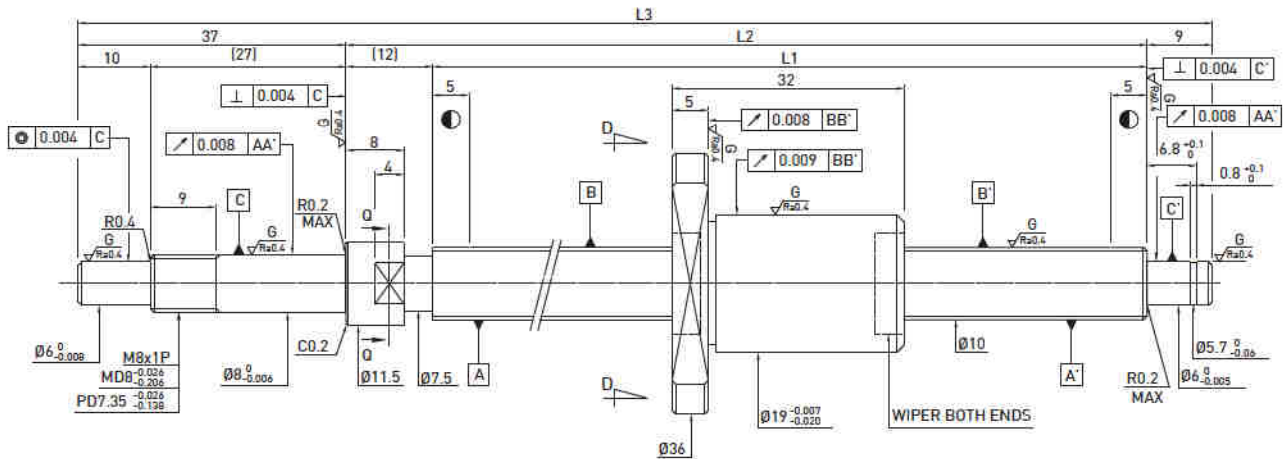
Ball screw Data	
Direction	Right Hand
Lead (mm)	2
Lead Angle	3.57°
P.C.D (mm)	10.2
Screw P.C.D (mm)	10.2
RD (mm)	8.652
Steel Ball (mm)	Ø1.5
Circuits	1x3
Dynamic Load C (kgf)	196
Static Load Co (kgf)	348
Axial Play (mm)	0 0.005 MAX
Drag Torque (kgf-cm)	0.01-0.24 0.05 MAX
Spacer Ball	- -



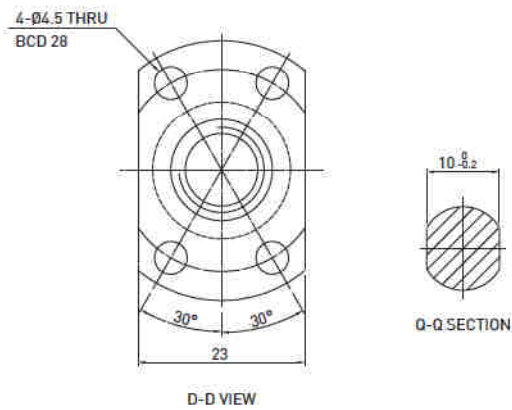
Unit : mm

Stroke	HIWIN Code	L1	L2	L3	Accuracy grade
50	R10-2T3-FSI-100-158-0.008	100	112	158	C3
100	R10-2T3-FSI-150-208-0.008	150	162	208	C3
150	R10-2T3-FSI-200-258-0.008	200	212	258	C3
200	R10-2T3-FSI-250-308-0.008	250	262	308	C3

FSI Type (SHAFT OD 10, LEAD 2.5) ◀ Miniature



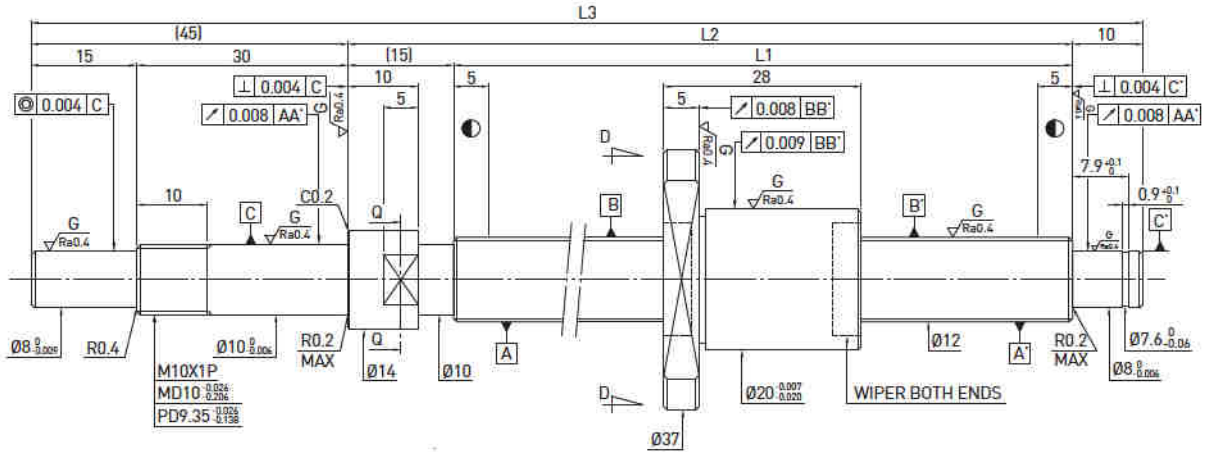
Ball screw Data	
Direction	Right Hand
Lead (mm)	2.5
Lead Angle	4.46°
P.C.D (mm)	10.2
Screw P.C.D (mm)	10.2
RD (mm)	8.136
Steel Ball (mm)	Ø2
Circuits	1x3
Dynamic Load C (kgf)	274
Static Load Co (kgf)	438
Axial Play (mm)	0 0.005 MAX
Drag Torque (kgf-cm)	0.02~0.3 0.05 MAX
Spacer Ball	- -



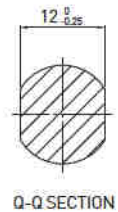
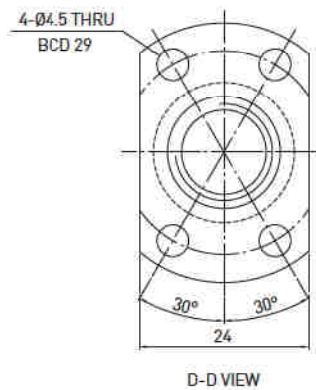
Unit : mm

Stroke	HIWIN Code	L1	L2	L3	Accuracy grade
50	R10-2.5T3-FSI-100-158-0.008	100	112	158	C3
100	R10-2.5T3-FSI-150-208-0.008	150	162	208	C3
150	R10-2.5T3-FSI-200-258-0.008	200	212	258	C3
200	R10-2.5T3-FSI-250-308-0.008	250	262	308	C3

FSI Type (SHAFT OD 12, LEAD 2) ◀ Miniature



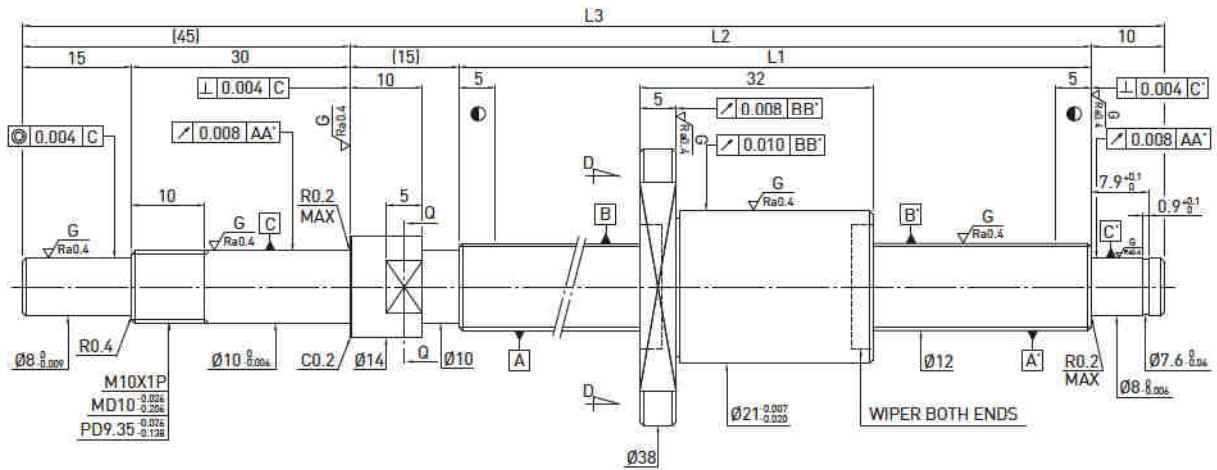
Ball screw Data	
Direction	Right Hand
Lead (mm)	2
Lead Angle	2.99°
P.C.D (mm)	12.2
Screw P.C.D (mm)	12.2
RD (mm)	10.652
Steel Ball (mm)	Ø1.5
Circuits	1x3
Dynamic Load C (kgf)	217
Static Load Co (kgf)	430
Axial Play (mm)	0 0.005 MAX
Drag Torque (kgf-cm)	0.04-0.35 0.1 MAX
Spacer Ball	- -



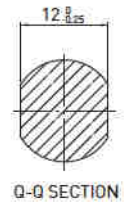
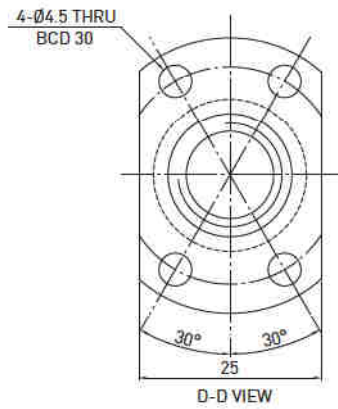
Unit : mm

Stroke	HIWIN Code	L1	L2	L3	Accuracy grade
50	R12-2T3-FSI-110-180-0.008	110	125	180	C3
100	R12-2T3-FSI-160-230-0.008	160	175	230	C3
150	R12-2T3-FSI-210-280-0.008	210	225	280	C3
200	R12-2T3-FSI-260-330-0.008	260	275	330	C3
250	R12-2T3-FSI-310-380-0.008	310	325	380	C3

FSI Type (SHAFT OD 12, LEAD 2.5) ◀ Miniature



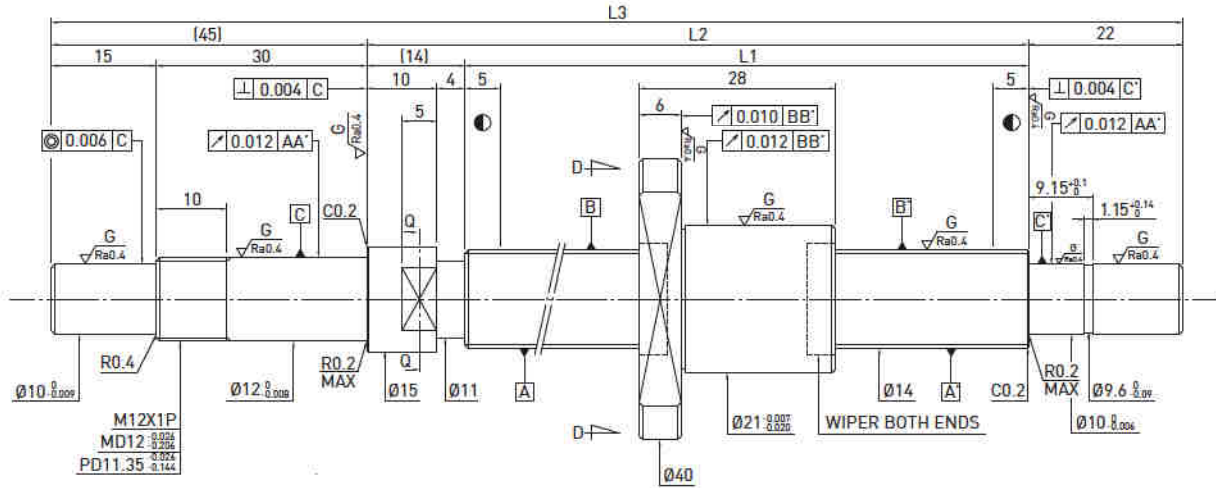
Ball screw Data	
Direction	Right Hand
Lead (mm)	2.5
Lead Angle	3.73°
P.C.D (mm)	12.2
Screw P.C.D (mm)	12.2
RD (mm)	10.136
Steel Ball (mm)	Ø2
Circuits	1x3
Dynamic Load C (kgf)	309
Static Load Co (kgf)	546
Axial Play (mm)	0 0.005 MAX
Drag Torque (kgf-cm)	0.04-0.35 0.1 MAX
Spacer Ball	- -



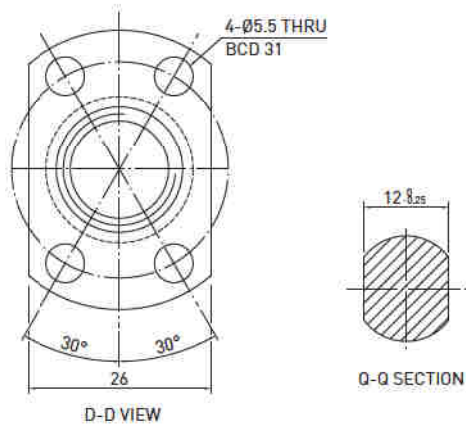
Unit : mm

Stroke	HIWIN Code	L1	L2	L3	Accuracy grade
50	R12-2.5T3-FSI-110-180-0.008	110	125	180	C3
100	R12-2.5T3-FSI-160-230-0.008	160	175	230	C3
150	R12-2.5T3-FSI-210-280-0.008	210	225	280	C3
200	R12-2.5T3-FSI-260-330-0.008	260	275	330	C3
250	R12-2.5T3-FSI-310-380-0.008	310	325	380	C3

FSI Type (SHAFT OD 14, LEAD 2) ◀ Miniature



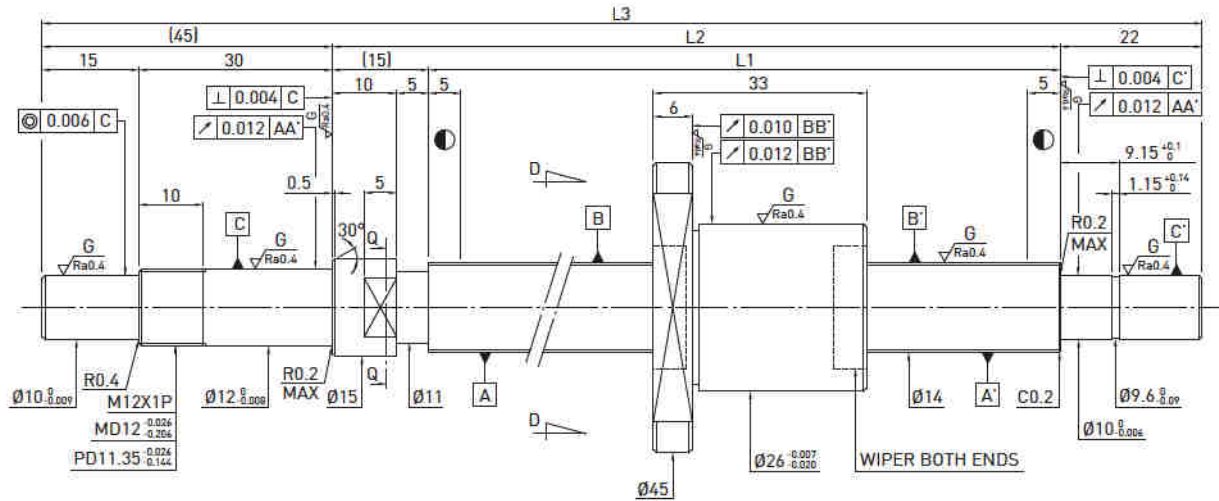
Ball screw Data	
Direction	Right Hand
Lead (mm)	2
Lead Angle	2.57°
P.C.D (mm)	14.2
Screw P.C.D (mm)	14.2
RD (mm)	12.652
Steel Ball (mm)	Ø1.5
Circuits	1x3
Dynamic Load C (kgf)	236
Static Load Co (kgf)	511
Axial Play (mm)	0 0.005 MAX
Drag Torque (kgf-cm)	0.05~0.5 -
Spacer Ball	- -



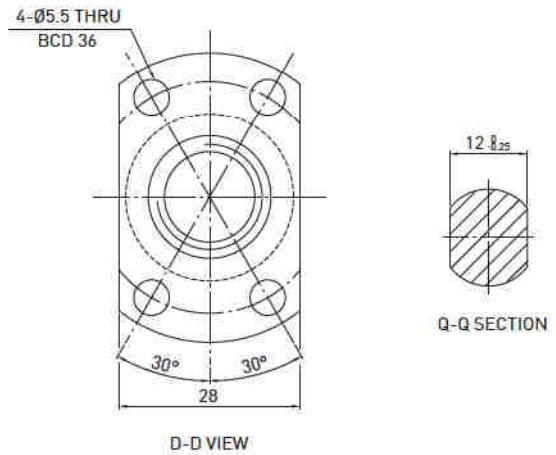
Unit : mm

Stroke	HIWIN Code	L1	L2	L3	Accuracy grade
50	R14-2T3-FSI-85-166-0.008	85	99	166	C3
100	R14-2T3-FSI-135-216-0.008	135	149	216	C3
150	R14-2T3-FSI-185-266-0.008	185	199	266	C3
200	R14-2T3-FSI-235-316-0.008	235	249	316	C3
250	R14-2T3-FSI-335-416-0.008	335	349	416	C3

FSI Type (SHAFT OD 14, LEAD 4) ◀ Miniature



Ball screw Data	
Direction	Right Hand
Lead (mm)	4
Lead Angle	5.11°
P.C.D (mm)	14.25
Screw P.C.D (mm)	14.25
RD (mm)	11.792
Steel Ball (mm)	Ø2.381
Circuits	1x3
Dynamic Load C (kgf)	403
Static Load Co (kgf)	725
Axial Play (mm)	0 0.005 MAX
Drag Torque (kgf-cm)	0.1-0.7 -
Spacer Ball	- -



Unit : mm

Stroke	HIWIN Code	L1	L2	L3	Accuracy grade
100	R14-4T3-FSI-148-230-0.008	148	163	230	C3
150	R14-4T3-FSI-198-280-0.008	198	213	280	C3
200	R14-4T3-FSI-248-330-0.008	248	263	330	C3
300	R14-4T3-FSI-348-430-0.008	348	363	430	C3
400	R14-4T3-FSI-448-530-0.008	448	463	530	C3